

LIGHTING RELAY PANEL SCHEDULE							17-Sep-04
RELAY PANEL NAME:		RPA (FIRST FLOOR, MASTER)		LOCATION:			ELECTRICAL ROOM 173
DESCRIPTION:							16-CONTACTOR ENCLOSURE
MOUNTING:							SURFACE
CONTROL CIRCUIT:							L1A-24
RELAY #	RELAY VOLT	RELAY AMP	DESCRIPTION OF CONTROL	SWITCH	CIRCUIT	NOTES	
1	277	20	WOMEN'S LOCKER	B2	H1A-3		
2	277	20	FAMILY CHANGING AREA	B2	H1A-1		
3	277	20	MEN'S LOCKER	B2	H1A-3		
4	277	20	SERVICE WALLPACS		H1A-1	3	
5	277	20	POOL PORCH BENCHES		H1A-1	2	
6	277	20	EXTERIOR POOL WALL PACKS	B4	H1A-1		
7	277	20	EAST ENTRY		H1A-1	2	
8	277	20	LOCKER ENTRY	B2	H1A-3		
9	277	20	GYM HALL	B1	H1A-3		
10	277	20	PARKING LOT NIGHT LIGHTS		H1A-3	3	
11	277	20	PARKING LOT LIGHTS		H1A-11	2	
12	277	20	ENTRY/ENTRY DRIVE		H1A-3	2	
13	277	20	SPARE				
14	277	20	SPARE				
15	277	20	SPARE				
16	277	20	SPARE				

NOTES:
 1. REFER TO LIGHTING CONTROL SWITCH SCHEDULE FOR MORE INFORMATION.
 2. PHOTOCELL ON, ASTRONOMICAL TIMECLOCK OFF CONTROL.
 3. PHOTOCELL ON, PHOTOCELL OFF.

LIGHTING RELAY PANEL SCHEDULE							17-Sep-04
RELAY PANEL NAME:		RPB (FIRST FLOOR)		LOCATION:			ELECTRICAL ROOM 112
DESCRIPTION:							16-CONTACTOR ENCLOSURE
MOUNTING:							SURFACE
CONTROL CIRCUIT:							L1B-43
RELAY #	RELAY VOLT	RELAY AMP	DESCRIPTION OF CONTROL	SWITCH	CIRCUIT	NOTES	
1	277	20	LOWER LOBBY	B1	H1B-3		
2	277	20	RECEPTION AREA	B1	H1B-3		
3	277	20	PLAY AREA	B1	H1B-3		
4	277	20	ENTRY CANS	--	H1B-2	2	
5	277	20	PARKING LOT WALLPACS	--	H1B-2	2	
6	277	20	WEST ENTRY	--	H1B-2	2	
7	277	20	SOUTH PORCH	--	H1B-2	2	
8	277	20	GYM EXTERIOR LIGHTING	--	H1B-2	2	
9	277	20	SPARE				
10	277	20	SPARE				
11	277	20	SPARE				
12	277	20	SPARE				
13	277	20	SPARE				
14	277	20	SPARE				
15	277	20	SPARE				
16	277	20	SPARE				

NOTES:
 1. REFER TO LIGHTING CONTROL SWITCH SCHEDULE FOR MORE INFORMATION.
 2. PHOTOCELL ON, ASTRONOMICAL TIMECLOCK OFF CONTROL.
 3. PHOTOCELL ON, PHOTOCELL OFF.

LIGHTING RELAY PANEL SCHEDULE							17-Sep-04
RELAY PANEL NAME:		RPC (MASTER LIBRARY)		LOCATION:			STORAGE 127
DESCRIPTION:							16-CONTACTOR ENCLOSURE
MOUNTING:							SURFACE
CONTROL CIRCUIT:							L1C-28
RELAY #	RELAY VOLT	RELAY AMP	DESCRIPTION OF CONTROL	SWITCH	CIRCUIT	NOTES	
1	277	20	CHILDRENS AREA	B7	H1C-19		
2	277	20	CHILDRENS AREA	B7	H1C-19		
3	277	20	QUIET PERIMETER	B8	H1C-21		
4	277	20	QUIET 1	B8	H1C-21	3	
5	277	20	QUIET 2	B8	H1C-21	3	
6	277	20	LIBRARY LINEAR 1	B7	H1C-23	3	
7	277	20	LIBRARY LINEAR 2	B7	H1C-23	3	
8	277	20	LIBRARY CANS 1	B7	H1C-19	3	
9	277	20	LIBRARY CANS 2	B7	H1C-19	3	
10	277	20	LIBRARY PENDANTS 1	B7	H1C-23		
11	277	20	LIBRARY PENDANTS 2	B7	H1C-23		
12	277	20	SPARE				
13	277	20	SPARE				
14	277	20	SPARE				
15	277	20	SPARE				
16	277	20	SPARE				

NOTES:
 1. REFER TO LIGHTING CONTROL SWITCH SCHEDULE FOR MORE INFORMATION.
 2. PHOTOCELL ON, ASTRONOMICAL TIMECLOCK OFF CONTROL.
 3. PHOTOCELL PC2 SHALL OVERRIDE PUSHBUTTON.

LIGHTING RELAY PANEL SCHEDULE							17-Sep-04
RELAY PANEL NAME:		RPD (SECOND FLOOR)		LOCATION:			ELECTRICAL ROOM 206
DESCRIPTION:							4-CONTACTOR ENCLOSURE
MOUNTING:							SURFACE
CONTROL CIRCUIT:							L2A-23
RELAY #	RELAY VOLT	RELAY AMP	DESCRIPTION OF CONTROL	SWITCH	CIRCUIT	NOTES	
1	277	20	FITNESS DUAL	B3	H2A-10		
2	277	20	FITNESS DUAL	B3	H2A-12		
3	277	20	LOBBY PENDANTS	B1	H2A-12	3	
4	277	20	SPARE				

NOTES:
 1. REFER TO LIGHTING CONTROL SWITCH SCHEDULE FOR MORE INFORMATION.
 2. PHOTOCELL ON, ASTRONOMICAL TIMECLOCK OFF CONTROL.
 3. PHOTOCELL PC3 SHALL OVERRIDE PUSHBUTTON.

LIGHTING RELAY PANEL SCHEDULE							17-Sep-04
RELAY PANEL NAME:		RPP (POOL)		LOCATION:			ELECTRICAL ROOM 206
DESCRIPTION:							4-CONTACTOR ENCLOSURE
MOUNTING:							SURFACE
CONTROL CIRCUIT:							L2A-23
RELAY #	RELAY VOLT	RELAY AMP	DESCRIPTION OF CONTROL	SWITCH	CIRCUIT	NOTES	
1	277	20	LEISURE POOL 1	B4	H2A-11	3	
2	277	20	LEISURE POOL 2	B4	H2A-7	3	
3	277	20	LAP POOL 1	B4	H2A-9	4	
4	277	20	LAP POOL 2	B4	H2A-3	4	

NOTES:
 1. REFER TO LIGHTING CONTROL SWITCH SCHEDULE FOR MORE INFORMATION.
 2. PHOTOCELL ON, ASTRONOMICAL TIMECLOCK OFF CONTROL.
 3. PHOTOSENSOR PC1 SHALL OVERRIDE PUSHBUTTON.
 4. PHOTOSENSOR PC2 SHALL OVERRIDE PUSHBUTTON.

EXTERIOR LUMINAIRE SCHEDULE										17-Sep-04
KEY	DESCRIPTION	MANUFACTURER CATALOG NUMBER	LAMP QTY	LAMP TYPE	VOLTS	MOUNTING INFORMATION	NOTES	MAX VA	PLACEMENT	
ED1	CERAMIC METAL HALIDE, 4' DOWNLIGHT ELEC BALLAST	LIGHTOLIER C400MRU-CCLW	1	C400MRU/830V/PL	277	RECESSED		29		
EPI	METAL HALIDE, ROUND EXTERIOR POLE LIGHT TYPE 3 DIST. SINGLE HEAD, ELEC BALLAST	WIDELITE ALBRP-250-3H-277-3R-3.5/4	1	MV250/40R/PA	277	POLE +20'-0"	1,4	300		
EP2	METAL HALIDE, ROUND EXTERIOR POLE LIGHT TYPE 3 DIST. TWIN HEAD, ELEC BALLAST	WIDELITE ALBRP-250-3H-277-3R-2 AT 180	2	MV250/40R/PA	277	POLE +20'-0"	1,4	600		
EP3	METAL HALIDE, DECORATIVE ROUND POLE LIGHT, ELEC BALLAST	ARCHITECTURAL AREA LIGHTING SL VT-HB-70TH-AHT-TRABU	1	C400MRU/830V/PL	277	POLE +18'-0"	2,4	90		
EP4	METAL HALIDE, DECORATIVE ROUND POLE LIGHT, ELEC BALLAST	ARCHITECTURAL AREA LIGHTING SL VT-HB-80TH-AHT-TRABU	1	C400MRU/830V/PL	277	POLE +18'-0"	2,4	70		
ES1	COMPACT FLUORESCENT, SCOPF STYLE WALL SCONCE, ELEC BALLAST	INDERSA LIGHTING BAC-1023B-WHT-TL	1	F15DB/830/ECO4P	277	SURFACE +8'-0"		18		
EN1	LED, ROUNDED WALL PACK ELEC BALLAST	GARDCO I21-DR-FT-50LA-NH-UNIV-WP		FURNISHED	277	SURFACE +15'-0"		51		
EV0	LED, ROUNDED WALL PACK ELEC BALLAST	GARDCO I21-DR-WT-50LA-NH-UNIV-WP		FURNISHED	277	SURFACE +12'-0"	3	51		
EV3	LED, ROUNDED WALL PACK ELEC BALLAST	GARDCO I21-DR-WT-35LA-NH-UNIV-WP		FURNISHED	277	SURFACE +18'-0"		38		

MOUNTING ABBREVIATIONS:
 AFF - ABOVE FINISHED FLOOR
 BFC - BELOW FINISHED CEILING
 COF - CENTER OF FIXTURE
 RFD - RECESSED FIXTURE DEPTH

GENERAL NOTES (FOR ALL SCHEDULED LUMINAIRES):
 A. PROVIDE ELECTRONIC BALLASTS WITH 10% THD FOR ALL FLUORESCENT AND CFL LUMINAIRES UNLESS OTHERWISE NOTED.
 B. FLUORESCENT LUMINAIRES CONTROLLED BY OCCUPANCY SENSORS SHALL HAVE PROGRAMMED-START BALLASTS.

NOTES SPECIFIC TO SCHEDULED LUMINAIRES (REFER TO 'NOTES' COLUMN WITHIN SCHEDULE):
 1. PROVIDE DESIGN 940 POLE #940-401-20
 2. PROVIDE DESIGN 940 POLE #940-401-15.
 3. MOUNTING HEIGHT AS INDICATED IN THIS SCHEDULE UNLESS NOTED OTHERWISE ON PLANS.
 4. PROVIDE CONCRETE BASE THAT STICKS 6" ABOVE GROUND. SEE DETAIL 3 SH E3.0

OCCUPANCY SENSOR/TIMER SCHEDULE			
KEY	DESCRIPTION	MFR. # CAT. NO.	Notes
1	PASSIVE INFRARED, DUAL LEVEL, WALL MOUNTED MOTION SENSOR	GREENGATE OSN-P-045-DTV-W	1
2	PASSIVE INFRARED, WALL MOUNTED MOTION SENSOR	GREENGATE OSN-P-045-MV-W	
3	ULTRASONIC, CEILING MOUNTED MOTION SENSOR	GREENGATE ODC-U-2000 SP20-MV	
4	PASSIVE INFRARED, CEILING MOUNTED MOTION SENSOR	GREENGATE OMC-P-2940-R SP20-MV	
5	TIMER SWITCH	GREENGATE TSN-MV	

NOTES:
 1. ARRANGE DIP SWITCHES SO THAT MOTION SENSOR IS IN THE 'ENERGY SAVER MODE'.

LIGHTING CONTROL SWITCH SCHEDULE						9/17/2000
SWITCH #	BUTTON	FUNCTION	RELAY	ENGRAVING	NOTES	
1	1	ON/OFF	RPB-1	LOWER LOBBY		
	2	ON/OFF	RPD-3	UPPER LOBBY		
	3	ON/OFF	RPB-2	RECEPTION AREA		
	4	ON/OFF	RPB-3	PLAY AREA		
	5	ON/OFF	RPA-4	GYM HALL		
2	1	ON/OFF	RPA-8	LOCKER HALL		
	2	ON/OFF	RPA-1	WOMEN'S LOCKER		
	3	ON/OFF	RPA-2	FAMILY CHANGING		
	4	ON/OFF	RPA-3	MEN'S LOCKER		
3	1	ON/OFF	RPG-1	GYM 1		
	2	ON/OFF	RPG-2	GYM 2		
	3	ON/OFF	RPG-3	GYM 3		
	4	ON/OFF	RPD-1	FITNESS 1		
	5	ON/OFF	RPD-2	FITNESS 2		
4	1	ON/OFF	RPP-1	LEISURE POOL 1		
	2	ON/OFF	RPP-2	LEISURE POOL 2		
	3	ON/OFF	RPP-4	LAP POOL 1		
	4	ON/OFF	RPP-3	LAP POOL 2		
	5	ON/OFF	RPA-6	OUTDOOR POOL		
5	1	OFF	SEE NOTE 2	ALL OFF	2	
6	1	ON/OFF	---	CLEANING	1	
7	1	ON/OFF	RPC-6.0.10	LIBRARY 1		
	2	ON/OFF	RPC-7.0.11	LIBRARY 2		
	3	ON/OFF	RPC-1	CHILDRENS 1		
	4	ON/OFF	RPC-2	CHILDRENS 2		
	5	OFF	SEE NOTE 3	ALL OFF	3	
8	1	ON/OFF	RPC-4	QUIET 1		
	2	ON/OFF	RPC-4	QUIET 2		
	3	ON/OFF	RPC-5	QUIET 3		
9	1	ON/OFF	---	CLEANING	4	

NOTES:
 1. OWNER TO SPECIFY LIGHTS NEEDED FOR CLEANING. FIELD PROGRAM SO THAT THIS KEYED SWITCH OVERRIDES THE AUTOMATIC TIME CLOCK SHUTOFF TO PROVIDE LIGHTING FOR AFTER HOURS CLEANING.
 2. BUTTON SHALL TURN OFF ALL RECREATION CENTER INTERIOR LIGHTING.
 3. BUTTON SHALL TURN OFF ALL LIBRARY INTERIOR LIGHTING.
 4. OWNER TO SPECIFY LIGHTS NEEDED FOR CLEANING. FIELD PROGRAM SO THAT THIS KEYED SWITCH OVERRIDES THE AUTOMATIC TIME CLOCK SHUTOFF TO PROVIDE LIGHTING FOR AFTER HOURS CLEANING.

LIGHTING RELAY PANEL SCHEDULE							17-Sep-04
RELAY PANEL NAME:		RPG (GYM)		LOCATION:			ELECTRICAL ROOM 206
DESCRIPTION:							4-CONTACTOR ENCLOSURE
MOUNTING:							SURFACE
CONTROL CIRCUIT:							L2A-23
RELAY #	RELAY VOLT	RELAY AMP	DESCRIPTION OF CONTROL	SWITCH	CIRCUIT	NOTES	
1	277	20	GYM	B3	H2A-1	3	
2	277	20	GYM	B3	H2A-3	3	
3	277	20	GYM	B3	H2A-9		
4	277	20	SPARE				

NOTES:
 1. REFER TO LIGHTING CONTROL SWITCH SCHEDULE FOR MORE INFORMATION.
 2. PHOTOCELL ON, ASTRONOMICAL TIMECLOCK OFF CONTROL.
 3. PROGRAM RELAY SO THAT MONDAY THRU THURSDAY, SUNRISE TO SUNSET, THESE TWO RELAYS ARE CONTROLLED BY PHOTOSENSOR FOR. AFTER SUNSET THESE RELAYS SHALL BE CONTROLLED MANUALLY BY SWITCH AT THE FRONT DESK. FRIDAY THRU SUNDAY THE PHOTOSENSOR SHALL BE DISABLED AND THE LIGHTS SHALL BE CONTROLLED AT THE FRONT DESK AT ALL TIMES.

LUMINAIRE SCHEDULE										17-Sep-04
KEY	DESCRIPTION	MANUFACTURER CATALOG NUMBER	LAMP QTY	LAMP TYPE	VOLTS	MOUNTING INFORMATION	NOTES	MAX VA	PLACEMENT	
D1	COMPACT FLUORESCENT, 6' OPEN DOWNLIGHT, ELEC BALLAST	LIGHTOLIER 8031 CLN 56132B U	1	F26TB/830/A/ECO	277	RECESSED		31		
D1A	COMPACT FLUORESCENT, 6' OPEN DOWNLIGHT, ELEC BALLAST	LIGHTOLIER 101P2642ICU-101H4CD	1	F32TB/830/A/ECO	277	RECESSED		36		
D2	COMPACT FLUORESCENT, 4' LENSED DIMMER DIMMABLE, ELEC BALLAST	LIGHTOLIER 2002GL-4000-101H4CD	1	F18TB/830/A/ECO	277	RECESSED		24		
D3	COMPACT FLUORESCENT, 6' OPEN DOWNLIGHT WITH DROP GLASS, ELEC BALLAST	LIGHTOLIER 8031CLN DS 56132B U	1	F32TB/830/A/ECO	277	RECESSED		31		
D5	COMPACT FLUORESCENT, 6' OPEN DOWNLIGHT, 0-10V DIM BALLAST	LIGHTOLIER 8031 CLN 56132B-JUM7	1	F32TB/830/A/ECO	277	RECESSED		36		
F1	FLUORESCENT, 2'X4' TROFFER, DUAL LEVEL, ELEC BALLAST	LIGHTOLIER HP902GLR228 UNV VV	2	F28W/TS/830/ECO	277	RECESSED GRID		54		
F1A	FLUORESCENT, 2'X4' TROFFER ELEC BALLAST	LIGHTOLIER HP902GLR228 UNV PG	2	F28W/TS/830/ECO	277	RECESSED GRID		54		
F1B	FLUORESCENT, 2'X4' TROFFER DIMMING BALLAST	LIGHTOLIER HP902GLR228 UNV	2	F28W/TS/830/ECO	277	RECESSED GRID	2	70		
F2A	FLUORESCENT, 32' DIRECT/INDIRECT FIXTURE, DIMMING, ELEC BALLAST	LEDALITE 7306-F02-1-G-32'-2-E-W-A3-36'-DS	16	F28W/TS/830/ECO	277	PENDANT 11'-0" AFF TO BOF	3,9	472		
F3	FLUORESCENT, 28' DIRECT/INDIRECT FIXTURE, DUAL LEVEL, ELEC BALLAST	LEDALITE 7406-F02-Q-G-28'-2-E-W-A3-60'	14	F28W/TS/830/ECO	277	PENDANT 11'-0" AFF TO BOF		413		
F4	FLUORESCENT, 4' STRIP LIGHT ELEC BALLAST	NALITE NS1215-277	1	F28W/TS/830/ECO	277	SURFACE		35		
F4A	FLUORESCENT, 4' STRIP LIGHT WITH WIRE GUARD, ELEC BALLAST	NALITE NS1215-277-WG	1	F28W/TS/830/ECO	277	SURFACE		35		
F5	FLUORESCENT, 3' STRIP ELEC BALLAST	NALITE NS1215-277	1	F28W/TS/830/ECO	277	SURFACE		25		
F6	FLUORESCENT, 6X LAMP HIGHBAY, LENS WIRE GUARD, ELEC BALLAST	NALITE TH164T300-CL-WG-ML5-3C	6	F54W/TS/830/ECO	277	PENDANT 25'-0" AFF TO BOF	1,10	351		
F7	FLUORESCENT, 32' DIRECT/INDIRECT FIXTURE, DUAL LEVEL, ELEC BALLAST	LEDALITE 7406-F02-Q-G-32'-2-E-W-A3-60'	16	F28W/TS/830/ECO	277	PENDANT		472		
F8	FLUORESCENT, 2'X2' TROFFER DUAL LEVEL, ELEC BALLAST	LIGHTOLIER HP902GLR214 UNV VV	2	F14W/TS/830/ECO	277	RECESSED		32		
F9	FLUORESCENT, 24' TROFFER, GLASS WINGS, ELEC BALLAST	LIGHTOLIER OCE2GL0824UNVPG	2	F55B/830	277	RECESSED GRID		120		
F10	FLUORESCENT, 8' DIRECT/INDIRECT FIXTURE, DUAL LEVEL, ELEC BALLAST	LEDALITE 7406-F02-Q-N-								

OWNER EQUIPMENT SCHEDULE											17-Sep-04
KEY	EQUIPMENT	LOAD (VA)	VOLTS	PH	BRANCH CIRCUIT CONDUCTORS	COND.	DISCONNECT SWITCH	RECEP	CIRCUIT BREAKER	NOTES	
ADO	AUTOMATIC DOOR 1/4 HP	696	120	1	2#12, #12G	1/2"	THERMAL OL SWITCH		20A/1P	5	
BKBD	BACKBOARD MOTOR 1/2 HP	1176	120	1	2#12, #12G	1/2"	THERMAL OL SWITCH		20A/1P		
BKSR	BOOK SORTER	1176	120	1	2#12, #12G	1/2"	THERMAL OL SWITCH		20A/1P		
CLNR	POOL CLEANER	2400	120	1	2#12, #12G	1/2"		L5-20R	20A/1P	4	
COMP	COMPUTER	400	120	1	2#12, #12G	1/2"		5-20R	20A/1P		
COPY	COPY MACHINE	1500	120	1	2#12, #12G	1/2"		5-20R	20A/1P		
CURT	CURTAIN MOTOR	1176	120	1	2#12, #12G	1/2"	THERMAL OL SWITCH		20A/1P		
DSCR	DROP SCREEN	696	120	1	2#12, #12G	1/2"	TOGGLE		20A/1P		
DRY	DRYER	5000	208	1	3#10, #10G	3/4"		14-30R	30A/2P		
DN	DISHWASHER	1000	120	1	2#12, #12G	1/2"		5-20R	20A/1P		
EXR	EXERCISE EQUIPMENT	1500	120	1	2#12, #12G	1/2"		5-20R	20A/1P		
FAN	HALL MOUNTED FAN	250	120	1	2#12, #12G	1/2"		5-20R	20A/1P		
FIRE	FIREPLACE IGNITION	120	120	1	2#12, #12G	1/2"	TOGGLE SWITCH		20A/1P		
HAND	HAND DRYER	1920	120	1	2#12, #12G	1/2"	FURNISHED W/ UNIT		20A/1P		
LAP	LAP TIMER	250	120	1	2#12, #12G	1/2"	FURNISHED W/ UNIT		20A/1P	2	
MHW	MICROWAVE	1500	120	1	2#12, #12G	1/2"		5-20R	20A/1P		
PRINT	PRINTER	500	120	1	2#12, #12G	1/2"		5-20R	20A/1P		
PROJ	PROJECTOR	1500	120	1	2#12, #12G	1/2"		5-20R	20A/1P		
REF	REFRIGERATOR	1000	120	1	2#12, #12G	1/2"		5-20R	20A/1P		
RNG	RANGE	5000	208	1	3#8, #10G	3/4"		14-50R	50A/3P		
SCBD	SCOREBOARD	1500	120	1	2#12, #12G	1/2"	TOGGLE SWITCH		20A/1P		
SCBK	LIBRARY SELF CHECKOUT	500	120	1	2#12, #12G	1/2"		5-20R	20A/1P		
SND	SOUND EQUIPMENT	1000	120	1	2#12, #12G	1/2"		5-20R	20A/1P		
SUIT	SUITEMATE	1500	120	1	2#12, #12G	1/2"	FURNISHED W/ UNIT		20A/1P		
TV	TELEVISION	250	120	1	2#12, #12G	1/2"		5-20R	20A/1P		
WASH	WASHER	1500	120	1	2#12, #12G	1/2"		5-20R	20A/1P		
WSC1	WINDOW SCREEN	500	120	1	2#12, #12G	1/2"	KEYED SWITCH		20A/1P	3	
WSC2	WINDOW SCREEN	100	120	1	2#12, #12G	1/2"	KEYED SWITCH		20A/1P	3	
VEND	VENDING MACHINE	1500	120	1	2#12, #12G	1/2"		5-20R	20A/1P		

GENERAL NOTES (FOR ALL SCHEDULED EQUIPMENT):

A. FIELD VERIFY ALL EQUIPMENT LOADS, VOLTAGES, AND RECOMMENDED OCP SIZING PRIOR TO ENERGIZING CIRCUIT.

NOTES SPECIFIC TO SCHEDULED EQUIPMENT (REFER TO NOTES COLUMN WITHIN SCHEDULE):

1. PROVIDE PUSHBUTTONS TO CONTROL GARAGE DOORS. INSTALL PER MANUFACTURERS INSTALLATION INSTRUCTIONS.

2. VERIFY MOUNTING HEIGHT OF JUNCTION BOX FOR LAP TIMER POWER WITH ARCHITECT PRIOR TO ROUGH-IN.

3. PROVIDE JUNCTION BOX IN TOP WINDOW JAM. COORDINATE JUNCTION BOX LOCATION WITH SHADE PROVISIONS PRIOR TO ROUGH-IN. INSTALL POWER PER MANUFACTURERS INSTALLATION INSTRUCTIONS.

4. ONLY ONE CLEANER CAN BE PLUGGED IN AT A TIME IN THE NATATORIUM.

5. PROVIDE 1/2" CONDUITS BETWEEN PUSHBUTTONS AND DOOR POWER. INSTALL PER MANUFACTURERS INSTALLATION INSTRUCTIONS.

MECHANICAL AND PLUMBING EQUIPMENT SCHEDULE											17-Sep-04
KEY	EQUIPMENT	LOAD (VA)	VOLTS	PH	BRANCH CIRCUIT CONDUCTORS	COND.	DISCONNECT SWITCH	FUSE	CIRCUIT BREAKER	NOTES	
AC	AC UNIT 17.3 FLA	104	208	1	2#12, #12G	1/2"	THERMAL OL SWITCH		15A/2P	LIC-39,41	
AC	AC UNIT 0.5 FLA	104	208	1	2#12, #12G	1/2"	THERMAL OL SWITCH		15A/2P	LIA-18,20	
AC	AC UNIT 0.5 FLA	104	208	1	2#12, #12G	1/2"	THERMAL OL SWITCH		15A/2P	LPA-26,28	
AC	AC UNIT 0.5 FLA	104	208	1	2#12, #12G	1/2"	THERMAL OL SWITCH		15A/2P	LIA-28,30	
CF	LARGE SCALE FAN 1.5HP	2494	480	3	3#12, #12G	1/2"	30A/3P		15A/3P	H2M-26,28,30	
CF	LARGE SCALE FAN 1.5HP	2494	480	3	3#12, #12G	1/2"	30A/3P		15A/3P	H2M-19,15,17	
CU	CONDENSING UNIT 17.3 FLA	3548	208	1	2#10, #10G	1/2"	THERMAL OL SWITCH		35A/2P	LIC-31,33	
CU	CONDENSING UNIT 17.3 FLA	3548	208	1	2#10, #10G	1/2"	THERMAL OL SWITCH		35A/2P	L2A-49,51	
CU	CONDENSING UNIT 17.3 FLA	3548	208	1	2#10, #10G	1/2"	THERMAL OL SWITCH		35A/2P	L2A-53,55	
CU	CONDENSING UNIT 17.3 FLA	3548	208	1	2#10, #10G	1/2"	THERMAL OL SWITCH		35A/2P	L2A-57,59	
CUH	CABINET UNIT HEATER 12.7 MCA	10599	480	3	4#12, #12G	1/2"	PROVIDED W/ UNIT		20A/3P	HIM-14,16,18	
CUH	CABINET UNIT HEATER 7.3 MCA	6069	480	3	4#12, #12G	1/2"	PROVIDED W/ UNIT		15A/3P	HIMB-1,3,5	
CUH	CABINET UNIT HEATER 12.7 MCA	10599	480	3	4#12, #12G	1/2"	PROVIDED W/ UNIT		20A/3P	HIM-38,35,37	
EF	EXHAUST FAN, LKR RMB 1.0 HP	2216	277	1	2#12, #12G	1/2"	THERMAL OL SWITCH		20A/1P	H2M-25	
EF	EXHAUST FAN, RESTROOMS 1/4 HP	696	120	1	2#12, #12G	1/2"	THERMAL OL SWITCH		20A/1P	L2A-35	
EF	EXHAUST FAN, RESTROOM 48W	48	120	1	2#12, #12G	1/2"	THERMAL OL SWITCH		20A/1P	LIC-1	
EF	EXHAUST FAN, RESTROOM 115W	115	120	1	2#12, #12G	1/2"	THERMAL OL SWITCH		20A/1P	L1B-38	
EF	EXHAUST FAN, KITCHEN 1/4 HP	696	120	1	2#12, #12G	1/2"	THERMAL OL SWITCH		20A/1P	L2A-35	
EF	EXHAUST FAN, SURGE 1/4 HP	696	120	1	2#12, #12G	1/2"	THERMAL OL SWITCH		20A/1P	L2A-25	
EF	EXHAUST FAN, SURGE 1/4 HP	696	120	1	2#12, #12G	1/2"	THERMAL OL SWITCH		20A/1P	L2A-25	
EF	EXHAUST FAN, JAN 204 80W	80	120	1	2#12, #12G	1/2"	THERMAL OL SWITCH		20A/1P	L2A-1	
EF	EXHAUST FAN, ELEV. MECH 1/4 HP	696	120	1	2#12, #12G	1/2"	THERMAL OL SWITCH		20A/1P	L2A-31	
EF	EXHAUST FAN, ELEC 173 1/4 HP	696	120	1	2#12, #12G	1/2"	THERMAL OL SWITCH		20A/1P	L2A-29	
EF	EXHAUST FAN, ELEC 112 1/4 HP	696	120	1	2#12, #12G	1/2"	THERMAL OL SWITCH		20A/1P	L2A-35	
EF	EXHAUST FAN, ELEC 206 1/4 HP	696	120	1	2#12, #12G	1/2"	THERMAL OL SWITCH		20A/1P	L2A-31	
EW	ELECTRIC WATER COOLER 1/3 HP	612	120	1	2#12, #12G	1/2"	NEMA 5-20R		20A/1P	SEE PLANS	
GDU	GARBAGE DISPOSER 1/2 HP	1176	120	1	2#12, #12G	1/2"	NEMA 5-20R		20A/1P	SEE PLANS	
GH	GAS WATER HEATER 1.0 FLA, 1/3 HP	864	120	1	2#12, #12G	1/2"	OL SWITCH		20A/1P	LIA-2	
GH	GAS WATER HEATER 1.0 FLA, 1/3 HP	864	120	1	2#12, #12G	1/2"	OL SWITCH		20A/1P	LIA-4	
GH	GAS WATER HEATER 1.0 FLA, 1/3 HP	864	120	1	2#12, #12G	1/2"	OL SWITCH		20A/1P	LIA-6	
GH	GAS WATER HEATER 1.0 FLA, 1/3 HP	864	120	1	2#12, #12G	1/2"	OL SWITCH		20A/1P	LIA-8	
PDU	POOL DEHAUMID UNIT 90.7 MCA	75372	480	3	4#12, #12G	1-1/4"	100A/3P		110A/3P	H2M-7,9,11	
PP	HOT WATER CIRC PUMP 1/8 HP	528	120	1	2#12, #12G	1/2"	THERMAL OL SWITCH		20A/1P	LIA-8	
RTU	ROOF TOP UNIT 78.1 MCA	65284	480	3	4#18, #18G	1-1/4"	100A/3P		100A/3P	H2M-1,3,5	
RTU	ROOF TOP UNIT 124.5 MCA	109507	480	3	4-1/0, #16G	2"	200A/3P		150A/3P	H2M-2,4,6	
RTU	ROOF TOP UNIT 61.0 MCA	50649	480	3	4#18, #18G	1-1/4"	100A/3P		70A/3P	H2M-8,10,12	
RTU	ROOF TOP UNIT 55.0 MCA	45726	480	3	4#18, #18G	1-1/4"	100A/3P		70A/3P	HIC-1,3,5	
SE	SEWAGE EJECTOR CONTROL PANEL, 1.0 HP	1745	480	3	4#12, #12G	1/2"	60A/3P		15A/3P	HIM-7,9,11	
SP	SUMP PUMP 1/2 HP	1176	120	1	2#12, #12G	1/2"	THERMAL OL SWITCH		20A/1P	L1B-47	
SP	SUMP PUMPS CONTROL PANEL, 2.0 HP	2825	480	3	4#12, #12G	1/2"	30A/3P		15A/3P	HIM-19,15,17	
UH	UNIT HEATER 12.1 FLA	10060	480	3	3#12, #12G	1/2"	PROVIDED W/ UNIT		20A/3P	HIM-1,3,5	
UH	UNIT HEATER 10.6 FLA	10060	480	3	3#12, #12G	1/2"	PROVIDED W/ UNIT		20A/3P	HIM-2,4,6	
UH	UNIT HEATER 11.9 FLA	3296	277	1	2#12, #12G	1/2"	PROVIDED W/ UNIT		20A/1P	HIM-21	
UH	UNIT HEATER 4.1 FLA	3296	277	1	2#12, #12G	1/2"	PROVIDED W/ UNIT		20A/1P	HIM-19	
UH	UNIT HEATER 6.1 FLA	5071	480	3	3#12, #12G	1/2"	PROVIDED W/ UNIT		15A/3P	HIMB-2,4,6	
VAV	VARIABLE AIR VOLUME 2-1 7.0KN	7000	480	3	3#12, #12G	1/2"	PROVIDED W/ UNIT		15A/3P	HIM-8,10,12	
VAV	VARIABLE AIR VOLUME 2-2 6.0KN	6000	480	1	2#12, #12G	1/2"	PROVIDED W/ UNIT		20A/2P	HIM-22,24	
VAV	VARIABLE AIR VOLUME 2-3 4.0KN	4000	277	1	2#12, #12G	1/2"	PROVIDED W/ UNIT		20A/1P	HIM-25	
VAV	VARIABLE AIR VOLUME 2-4 6.0KN	6000	480	1	2#12, #12G	1/2"	PROVIDED W/ UNIT		20A/2P	HIM-27,29	
VAV	VARIABLE AIR VOLUME 2-5 4.0KN	4000	277	1	2#12, #12G	1/2"	PROVIDED W/ UNIT		20A/1P	HIM-23	
VAV	VARIABLE AIR VOLUME 2-6 7.0KN	7000	480	3	3#12, #12G	1/2"	PROVIDED W/ UNIT		15A/3P	HIMB-38,40,42	
VAV	VARIABLE AIR VOLUME 2-7 2.0KN	2000	277	1	2#12, #12G	1/2"	PROVIDED W/ UNIT		20A/1P	HIMB-28	
VAV	VARIABLE AIR VOLUME 2-8 1.0KN	1000	277	1	2#12, #12G	1/2"	PROVIDED W/ UNIT		20A/1P	HIMB-39	
VAV	VARIABLE AIR VOLUME 2-9 5.0KN	5000	480	1	2#12, #12G	1/2"	PROVIDED W/ UNIT		15A/2P	HIMB-34,36	
VAV	VARIABLE AIR VOLUME 2-10 3.0KN	3000	277	1	2#12, #12G	1/2"	PROVIDED W/ UNIT		20A/1P	HIMB-30	
VAV	VARIABLE AIR VOLUME 2-11 20.0KN	20000	480	3	3#18, #10G	3/4"	PROVIDED W/ UNIT		35A/3P	HIMB-7,9,11	
VAV	VARIABLE AIR VOLUME 2-12 7.0KN	7000	480	3	3#12, #12G	1/2"	PROVIDED W/ UNIT		15A/3P	HIMB-25,27,29	
VAV	VARIABLE AIR VOLUME 2-13 18.0KN	18000	480	3	3#10, #10G	1/2"	PROVIDED W/ UNIT		30A/3P	H2M-14,16,18	
VAV	VARIABLE AIR VOLUME 2-14 17.0KN	17000	480	3	3#10, #10G	1/2"	PROVIDED W/ UNIT		30A/3P	H2M-19,21,23	
VAV	VARIABLE AIR VOLUME 3-1 8.0KN	8000	480	3	3#12, #12G	1/2"	PROVIDED W/ UNIT		15A/3P	HIMB-8,10,12	
VAV	VARIABLE AIR VOLUME 3-2 8.0KN	8000	480	3	3#12, #12G	1/2"	PROVIDED W/ UNIT		15A/3P	HIMB-19,15,17	
VAV	VARIABLE AIR VOLUME 3-3 9.0KN	9000	480	3	3#12, #12G	1/2"	PROVIDED W/ UNIT		15A/3P	HIMB-14,16,18	
VAV	VARIABLE AIR VOLUME 3-4 4.0KN	4000	277	1	2#12G, #12G	1/2"	PROVIDED W/ UNIT		20A/1P	HIMB-31	
VAV	VARIABLE AIR VOLUME 3-5 18.0KN	18000	480	3	3#10, #10G	1/2"	PROVIDED W/ UNIT		30A/3P	HIMB-19,21,23	
VAV	VARIABLE AIR VOLUME 3-6 9.0KN	9000	480	3	3#12, #12G	1/2"	PROVIDED W/ UNIT		15A/3P	HIMB-20,22,24	
VAV	VARIABLE AIR VOLUME 4-1 6.0KN	6000	480	1	2#12, #12G	1/2"	PROVIDED W/ UNIT		20A/2P	HIC-7,9	
VAV	VARIABLE AIR VOLUME 4-2 11.0KN	11000	480	3	3#12, #12G	1/2"	PROVIDED W/ UNIT		20A/3P	HIC-2,4,6	
VAV	VARIABLE AIR VOLUME 4-3 5.0KN	5000	480	1	2#12, #12G	1/2"	PROVIDED W/ UNIT		15A/2P	HIC-11,13	
VAV	VARIABLE AIR V										

PANEL HIA										17-Sep-20												
PROJECT: Fruita Community Center					JOB NUMBER: 29009.00																	
LOCATION: ELEC 175					COMMENTS:																	
FED FROM: MDC																						
VOLTAGE L-L: 480 V					BUS RATING: 100 AMPS																	
VOLTAGE L-G: 277 V					M.L.O.																	
TYPE: 3PH/4W					O.C. PROTECTION: S.C.R.M.S. RATING:					35,000 A.I.C. FULLY RATED												
MOUNTING: SURFACE																						
CIR NO.	RATING	POLES	LOAD VA	LOAD TYPE	LOAD SERVED	BUS	LOAD SERVED	LOAD TYPE	LOAD VA	CIRCUIT BREAKER	CIR NO.	RATING	POLES	LOAD VA	LOAD TYPE	LOAD SERVED	BUS	LOAD SERVED	LOAD TYPE	LOAD VA	CIRCUIT BREAKER	CIR NO.
1	20	1	2966	L	L-ELEC, STG, EXT, FAM	A	SPACE				2	20	1	3241	L	L-LOCKERS, HALL	B	SPACE				3
3	20	1	2230	L	L-PARKING, NL, ENTRY	C	SPACE				4	20	1	2230	L	L-PARKING, NL, ENTRY	C	SPACE				5
7	20	1			SPARE	A	SPACE				8	20	1			SPARE	B	SPACE				9
11	20	1	2280	L	L-PARKING	C	SPACE				12	20	1			SPARE	A	SPACE				13
15	20	1			SPARE	A	SPACE				16	20	1			SPARE	B	SPACE				17
17	20	1			SPARE	B	SPACE				18	20	1			SPARE	C	SPACE				19
19	20	1			SPARE	A	SPACE				20	20	1			SPARE	LIA		5	9830	3	70
21	20	1			SPARE	B	SPACE				22	20	1			SPARE	VIA	5	9607			23
23	20	1			SPARE	C	SPACE				24	20	1			SPARE	TIA	5	9671			25
LOAD TYPE DESCRIPTIONS																						
L - LIGHTING, H - HEAT, R - RECEPTACLE, LM - LARGEST MOTOR, M - MOTOR, E - EQUIPMENT, KE - KITCHEN EQUIPMENT, S - SUBFEED																						
TOTAL CONNECTED LOADS										PANEL (FEEDER) DEMAND LOAD CALCULATIONS												
PHASE A PHASE B PHASE C										LOAD TYPE												
PANEL VA 12,426 12,848 14,181										CONTINUOUS (L OR H) 10,347 x 1.25 = 12,934 VA												
PANEL A 46 46 51										RECEPTACLE												
PHASE BALANCING (BASED ON CONNECTED LOADS ABOVE)										FIRST 10,000 VA: 0 x 1.00 = 0 VA												
A - B - C - A										ADDITIONAL VA: 0 x 0.50 = 0 VA												
98% 97% 91%										LARGEST MOTOR 0 x 1.25 = 0 VA												
MOTOR 0 x 1.00 = 0 VA										EQUIPMENT 0 x 1.00 = 0 VA												
KITCHEN EQUIPMENT 0 x 1.00 = 0 VA										PIECES OF EQUIPMENT: 0												
PANEL VA 19,075 19,698 19,309										SUBFEED 29,108 x 1.00 = 29,108 VA												
FEED THRU VA 15,075 15,698 15,309																						
TOTAL VA 47 47 55																						

PANEL HIB										17-Sep-20												
PROJECT: Fruita Community Center					JOB NUMBER: 29009.00																	
LOCATION: ELEC 112					COMMENTS:																	
FED FROM: MDC																						
VOLTAGE L-L: 480 V					BUS RATING: 200 AMPS																	
VOLTAGE L-G: 277 V					M.L.O.																	
TYPE: 3PH/4W					O.C. PROTECTION: S.C.R.M.S. RATING:					14,000 A.I.C. FULLY RATED												
MOUNTING: SURFACE																						
CIR NO.	RATING	POLES	LOAD VA	LOAD TYPE	LOAD SERVED	BUS	LOAD SERVED	LOAD TYPE	LOAD VA	CIRCUIT BREAKER	CIR NO.	RATING	POLES	LOAD VA	LOAD TYPE	LOAD SERVED	BUS	LOAD SERVED	LOAD TYPE	LOAD VA	CIRCUIT BREAKER	CIR NO.
1	20	3	2733	L	L-ELEC, KIT, MULTI	A	L-PORCH, PARKING	L	984		2	20	2									3
3	20	1	3866	L	L-LOBBY, LOUNGE	B	SPACE				4	20	1	3786	L	L-RECEP, RR, CHLD, OFF, PTY	C	SPACE				5
7	20	1	1458	L	L-SENSOR	A	SPACE				8	20	1			SPARE	B	SPACE				9
11	20	1			SPARE	A	SPACE				12	20	1			SPARE	A	SPACE				13
15	20	1			SPARE	A	SPACE				16	20	1			SPARE	B	SPACE				17
17	20	1			SPARE	B	SPACE				18	20	1			SPARE	C	SPACE				19
19	20	1			SPARE	A	SPACE				20	20	1			SPARE	LIA	5	1902	3	125	20
21	20	1			SPARE	B	SPACE				22	20	1			SPARE	VIA	5	1864			23
23	20	1			SPARE	C	SPACE				24	20	1			SPARE	TIA	5	1832			25
LOAD TYPE DESCRIPTIONS																						
L - LIGHTING, H - HEAT, R - RECEPTACLE, LM - LARGEST MOTOR, M - MOTOR, E - EQUIPMENT, KE - KITCHEN EQUIPMENT, S - SUBFEED																						
TOTAL CONNECTED LOADS										PANEL (FEEDER) DEMAND LOAD CALCULATIONS												
PHASE A PHASE B PHASE C										LOAD TYPE												
PANEL VA 24,187 22,730 22,118										CONTINUOUS (L OR H) 12,827 x 1.25 = 16,034 VA												
PANEL A 82 82 83										RECEPTACLE												
PHASE BALANCING (BASED ON CONNECTED LOADS ABOVE)										FIRST 10,000 VA: 0 x 1.00 = 0 VA												
A - B - C - A										ADDITIONAL VA: 0 x 0.50 = 0 VA												
94% 97% 91%										LARGEST MOTOR 0 x 1.25 = 0 VA												
MOTOR 0 x 1.00 = 0 VA										EQUIPMENT 0 x 1.00 = 0 VA												
KITCHEN EQUIPMENT 0 x 1.00 = 0 VA										PIECES OF EQUIPMENT: 0												
PANEL VA 25,481 23,647 23,065										SUBFEED 56,208 x 1.00 = 56,208 VA												
FEED THRU VA 25,481 23,647 23,065																						
TOTAL VA 92 96 83																						

PANEL HIC										17-Sep-20												
PROJECT: Fruita Community Center					JOB NUMBER: 29009.00																	
LOCATION: STORAGE 127					COMMENTS: PROVIDE INTEGRAL TVSS.																	
FED FROM: SERVICE DISCONNECT #1																						
VOLTAGE L-L: 480 V					BUS RATING: 250 AMPS																	
VOLTAGE L-G: 277 V					M.L.O.																	
TYPE: 3PH/4W					O.C. PROTECTION: S.C.R.M.S. RATING:					14,000 A.I.C. FULLY RATED												
MOUNTING: SURFACE																						
CIR NO.	RATING	POLES	LOAD VA	LOAD TYPE	LOAD SERVED	BUS	LOAD SERVED	LOAD TYPE	LOAD VA	CIRCUIT BREAKER	CIR NO.	RATING	POLES	LOAD VA	LOAD TYPE	LOAD SERVED	BUS	LOAD SERVED	LOAD TYPE	LOAD VA	CIRCUIT BREAKER	CIR NO.
1	70	3	15242	M	RTU-4 (1)	A	VAV 4-2	H	3667	3	20	2										3
3	20	1	15242	M		B	VAV 4-2	H	3667		4	20	1									5
7	20	2	3000	H	VAV 4-1	A	VAV 4-5	H	2667	3	15	8										9
11	15	2	2500	H	VAV 4-3	C	VAV 4-3	H	2667		10	20	1									11
13	15	2	2500	H	VAV 4-6	A	VAV 4-6	H	3000	1	20	14										15
15	15	2	2500	H	VAV 4-4	B	VAV 4-7	H	3000	3	15	16										17
19	20	1	3099	L	L-CHILD, RR, STU, STG, PRG	A		H	3000		20	20	1	2437	L	L-OFF, STG, BREAK, READ	B	VAV 4-8	H	3000	3	15
23	20	1	3428	L	L-OPEN LIBRARY	C		H	3000		24	20	1			SPARE	A	SPACE				25
25	20	1			SPARE	B	SPACE				26	20	1			SPARE	C	SPACE				27
29	20	1			SPARE	C	SPACE				30	20	1			SPARE	A	SPACE				31
33	20	1			SPARE	B	SPACE				34	20	1			SPARE	C	SPACE				35
37	20	1			SPARE	A	SPACE				38	20	1			SPARE	LIC	5	10289	3	50	38
39	20	1			SPARE	B	SPACE				40	20	1			SPARE	VIA	5	10337			41
41	20	1			SPARE	C	SPACE				42	20	1			SPARE	TIC	5	10282			43
LOAD TYPE DESCRIPTIONS																						
L - LIGHTING, H - HEAT, R - RECEPTACLE, LM - LARGEST MOTOR, M - MOTOR, E - EQUIPMENT, KE - KITCHEN EQUIPMENT, S - SUBFEED																						
TOTAL CONNECTED LOADS										PANEL (FEEDER) DEMAND LOAD CALCULATIONS												
PHASE A PHASE B PHASE C										LOAD TYPE												
PANEL VA 49,454 48,850 46,086										CONTINUOUS (L OR H) 64,956 x 1.25 = 81,195 VA												
PANEL A 174 166 170										RECEPTACLE												
PHASE BALANCING (BASED ON CONNECTED LOADS ABOVE)										FIRST 10,000 VA: 0 x 1.00 = 0 VA												
A - B - C - A										ADDITIONAL VA: 0 x 0.50 = 0 VA												
93% 92% 93%										LARGEST MOTOR 45,726 x 1.00 = 45,726 VA												
MOTOR 0 x 1.00 = 0 VA										EQUIPMENT 0 x 1.00 = 0 VA												
KITCHEN EQUIPMENT 0 x 1.00 = 0 VA										PIECES OF EQUIPMENT: 0												
PANEL VA 55,495 50,918 51,277										SUBFEED 30,708 x 1.00 = 30,708 VA												
FEED THRU VA 55,495 50,918 51,277																						
TOTAL VA 200 184 185																						

PANEL H2A										17-Sep-20												
PROJECT: Fruita Community Center					JOB NUMBER: 29009.00																	
LOCATION: ELEC 206					COMMENTS:																	
FED FROM: MDC																						
VOLTAGE L-L: 480 V					BUS RATING: 200 AMPS																	
VOLTAGE L-G: 277 V					M.L.O.																	
TYPE: 3PH/4W					O.C. PROTECTION: S.C.R.M.S. RATING:					14,000 A.I.C. FULLY RATED												
MOUNTING: SURFACE																						
CIR NO.	RATING	POLES	LOAD VA	LOAD TYPE	LOAD SERVED	BUS	LOAD SERVED	LOAD TYPE	LOAD VA	CIRCUIT BREAKER	CIR NO.	RATING	POLES	LOAD VA	LOAD TYPE	LOAD SERVED	BUS	LOAD SERVED	LOAD TYPE	LOAD VA	CIRCUIT BREAKER	CIR NO.
1	20	1	3744	L	L-GYM	A	L-GROUP STG, ELEC	L	3022	1	20	2										3
5	20	1	3942	L	L-GYM	B	L-ELE MECH	L	94	1	20	4										5
7	20	1	2200	L	L-POOL	A	SPACE				8	20	1	2200	L	L-POOL	A	SPACE				9
9	20	1	2378	L	L-POOL	B	L-FITNESS	L	2216	1	20	10										11
11	20	1	3300	L	L-POOL	C	L-FITNESS, LOBBY	L	2381	1	20	12										13
15	20	1	3650	L	L-POOL	A	SPACE				16	20	1			SPARE	B	SPACE				17
19	20	1			SPARE	A	SPACE				20	20	1			SPARE	L2A	5	2056	3	125	20
21	20	1			SPARE	B	SPACE				22	20	1			SPARE	VIA	5	2091			23
23	20	1			SPARE	C	SPACE				24	20	1			SPARE	T2A	5	20548			25
LOAD TYPE DESCRIPTIONS																						
L - LIGHTING, H - HEAT, R - RECEPTACLE, LM - LARGEST MOTOR, M - MOTOR, E - EQUIPMENT, KE - KITCHEN EQUIPMENT, S - SUBFEED																						
TOTAL CONNECTED LOADS										PANEL (FEEDER) DEMAND LOAD CALCULATIONS												
PHASE A PHASE B PHASE C										LOAD TYPE												
PANEL VA 31,582 29,328 30,221										CONTINUOUS (L OR H) 26,646 x 1.25 = 35,833 VA												
PANEL A 114 106 101										RECEPTACLE												
PHASE BALANCING (BASED ON CONNECTED LOADS ABOVE)										FIRST 10,000 VA: 0 x 1.00 = 0 VA												
A - B - C - A										ADDITIONAL VA: 0 x 0.50 = 0 VA												
93% 97% 94%										LARGEST MOTOR 0 x 1.25 = 0 VA												
MOTOR 0 x 1.00 = 0 VA										EQUIPMENT 0 x 1.00 = 0 VA												
KITCHEN EQUIPMENT 0 x 1.00 = 0 VA										PIECES OF EQUIPMENT: 0												
PANEL VA 34,201 31,427 32,639										SUBFEED 62,495 x 1.00 = 62,495 VA												
FEED THRU VA 34,201 31,427 32,639																						
TOTAL VA 123 113 118																						

PANEL HIM										17-Sep-20									
PROJECT: Fruita Community Center					JOB NUMBER: 29009.00														
LOCATION: ELEC 173					COMMENTS:														
FED FROM: MDC																			
VOLTAGE L-L: 480 V					BUS RATING: 200 AMPS														
VOLTAGE L-G: 277 V																			

PANEL LIB	PROJECT: Fruta Community Center	JOB NUMBER: 29005.00	17-Sep-03							
VOLTAGE L-L: 208 V		BUS RATING: 250 AMPS								
VOLTAGE L-G: 120 V		O.C. PROTECTION: 250 A/3P M.C.B.								
TYPE: 3PH/4W		S.C.R.M.S. RATING: 10,000 A.I.C. FULLY RATED								
MOUNTING: SURFACE										
CIR	CIRCUIT BREAKER	LOAD VA	LOAD TYPE	LOAD SERVED	BUS	LOAD SERVED	LOAD TYPE	LOAD VA	CIRCUIT BREAKER	CIR
NO. <td>RATING</td> <td>POLES</td> <td>VA <td>TYPE <td></td> <td></td> <td></td> <td>VA</td> <td>POLES</td> <td>RATING</td> </td></td>	RATING	POLES	VA <td>TYPE <td></td> <td></td> <td></td> <td>VA</td> <td>POLES</td> <td>RATING</td> </td>	TYPE <td></td> <td></td> <td></td> <td>VA</td> <td>POLES</td> <td>RATING</td>				VA	POLES	RATING
1	20	1	1080	R	R-ELEC LOUNGE	A	R-VENDING	E	1500	1
3	20	1	496	E	EAC	B	R-VENDING	E	1500	1
5	20	1	192	LM	M-AUTO DOOR	C	R-HENS RR	R	180	1
7	20	1	360	R	R-SENIOR COUNTER	A	R-HOMENS RR	R	180	1
9	20	1	180	R	R-SENIOR COUNTER	B	R-LOUNGE	E	680	1
11	20	1	1150	E	R-SENIOR CENTER	C	R-RECEPTION	R	360	1
13	20	1	180	R	R-KITCHEN	A	R-RECEPTION	R	360	1
15	20	1	180	R	R-KITCHEN	B	R-RECEPTION	R	360	1
17	20	1	180	R	R-KITCHEN	C	R-RECEPTION	R	360	1
19	50	2	2500	KE	R-RANGE	A	R-GYM	R	1440	20
21	20	1	2500	KE	R-KITCHEN	B	R-GYM BLEACHERS	R	540	1
23	20	1	180	R	R-KITCHEN	C	E-SCOREBOARD	E	1500	1
25	20	1	540	R	R-KITCHEN STORAGE	A	R-ELEV PIT	L	216	1
27	20	1	1000	KE	E-REFRIGERATOR	B	R-HORK AREA	E	1540	1
29	20	1	1500	KE	R-MICROWAVE	C	R-COPY MACHINE	E	1500	1
31	20	1	1000	KE	R-DISHWASHER	A	R-CHILD HORK AREA	E	1520	1
33	20	1	1176	M	M-DISPOSER	B	R-HORK AREA	E	1340	1
35	20	1	1080	R	R-MULTI ROOM	C	R-OFFICE 154, CHLD	E	1190	1
37	20	1	720	R	R-MULTI ROOM	A	R-PLAY, CHLD, STG, RRR	E	1150	1
39	20	1	1260	R	R-MULTI ROOM	B	R-TELE/COM	R	360	1
41	20	1	360	R	R-MULTI ROOM COUNTER	C	R-OFFICE 153, PARTY	E	1200	1
43	20	1	100	E	E-RELAY PANEL	A	R-OFFICE 152, STG	E	1340	1
45	20	1	1000	E	R-REFRIGERATOR	B	R-BREAK ROOM	R	360	1
47	20	1	1176	M	SUMP PUMP SP-1	C	E-DISHWASHER	E	1000	1
49	20	1	696	M	M-DROP SCREEN	A	M-GDU	M	1176	1
51	20	1	500	E	E-FIRE ALARM PANEL	B	E-REFRIG	E	1000	1
53	20	1	1500	E	R-PROJECTOR	C	R-BREAK COUNTER	R	180	1
55	20	1	1000	E	R-SOUND EQUIPMENT	A	R-BREAK COUNTER	R	360	1
57	20	1	1000	E	R-AUTO DOOR	B	R-AUTO DOOR	M	1798	1
59	20	1	1000	E	SPARE	C	R-PLAY, PARTY	R	540	1
61	20	1	1000	E	SPARE	A	M-GDU	M	1176	1
63	20	1	1000	E	SPARE	B	E-SCOREBOARD	E	1500	1
65	20	1	1000	E	SPARE	C	M-CHILD GDU	M	1176	1
67	20	1	1000	E	SPARE	A	R-CHILD COUNTER	R	360	1
69	20	1	1000	E	SPARE	B	SPARE			
71	20	1	1000	E	SPARE	C	SPARE			
73	20	1	1000	E	SPARE	A	SPARE			
75	20	1	1000	E	SPARE	B	SPARE			
77	20	1	1000	E	SPARE	C	SPARE			
79	20	1	1000	E	SPARE	A	SPARE			
81	20	1	1000	E	SPARE	B	SPARE			
83	20	1	1000	E	SPARE	C	SPARE			

LOAD TYPE DESCRIPTIONS											
L - LIGHTING, H - HEAT, R - RECEPTACLE, LM - LARGEST MOTOR, M - MOTOR, E - EQUIPMENT, KE - KITCHEN EQUIPMENT, S - SUBFEED											
TOTAL CONNECTED LOADS				PANEL (FEEDER) DEMAND LOAD CALCULATIONS							
PHASE A	PHASE B	PHASE C	PANEL	LOAD TYPE	LOAD	MULTIPLIER	DEMANDED LOAD				
PANEL VA	18,957	18,844	17,984	CONTINUOUS (L OR H)	216	x 1.25	= 274 VA				
PANEL A	188	187	180	RECEPTACLE							
PHASE BALANCING (BASED ON CONNECTED LOADS ABOVE)				FIRST 10,000 VA: 10,000 x 1.00 = 10,000 VA							
				ADDITIONAL VA: 2,420 x 0.50 = 1,210 VA							
				LARGEST MOTOR: 1008							
				MOTOR: 7,968 x 1.00 = 7,968 VA							
				EQUIPMENT: 25,306 x 1.00 = 25,306 VA							
				KITCHEN EQUIPMENT: 8,500 x 0.80 = 6,800 VA							
				PIECES OF EQUIPMENT: 4							
				SUBFEED: 0 x 1.00 = 0 VA							
PANEL VA	19,012	18,864	18,332								
FEED THRU VA											
TOTAL VA	19,012	18,864	18,332								
TOTAL A	188	187	183								

PANEL LIC	PROJECT: Fruta Community Center	JOB NUMBER: 29005.00	17-Sep-03							
VOLTAGE L-L: 208 V		BUS RATING: 200 AMPS								
VOLTAGE L-G: 120 V		O.C. PROTECTION: 150 A/3P M.C.B.								
TYPE: 3PH/4W		S.C.R.M.S. RATING: 10,000 A.I.C. FULLY RATED								
MOUNTING: SURFACE										
CIR	CIRCUIT BREAKER	LOAD VA	LOAD TYPE	LOAD SERVED	BUS	LOAD SERVED	LOAD TYPE	LOAD VA	CIRCUIT BREAKER	CIR
NO.	RATING	POLES	VA	TYPE				VA	POLES	RATING
1	20	1	900	E	R-ELEC, STG, RR, CHLD	A	R-LIBRARY, EXT, STG	E	1080	1
3	20	1	360	R	R-TELE/COM	B	R-BOOKSORTER	M	1176	1
5	20	1	360	R	R-TELE/COM	C	R-OFFICE	E	1200	1
7	20	1	360	R	R-CHECKOUT	A	R-OFFICE, READ, LIBRARY	E	1340	1
9	20	1	1500	R	R-COPY MACHINE	B	R-BREAK ROOM	R	360	1
11	20	1	1000	R	R-SELF CHECKOUT	C	R-GARBAGE DISPOSER	LM	1176	1
13	20	1	1200	E	R-COMPUTER STATION	A	R-READING ROOM	R	540	1
15	20	1	1200	E	R-COMPUTER STATION	B	R-READING FLOOR	R	1080	1
17	20	1	750	R	E-PROGRAM AREA	C	R-TEEN COMPUTER	E	1350	1
19	20	1	540	R	R-PROGRAM COUNTER	A	R-TEEN FLOOR	R	540	1
21	20	1	900	R	R-STUDY LIBRARY	B	R-LIBRARY FLOOR	R	720	1
23	20	1	1600	E	R-CHILD COPY	C	R-LIBRARY FLOOR	R	360	1
25	20	1	500	E	R-PRINTER	A	E-FIREPLACE, BUZZER	E	240	1
27	20	1	500	E	R-PRINTER	B	E-RELAY PANEL	E	240	1
29	20	1	1080	R	R-CHILDRENS LIBRARY	C	R-LIBRARY, TV	E	790	1
31	35	2	1798	LM	CU-1	A	R-TEEN COMPUTERS	E	800	1
33	20	1	1000	E	SPARE	B	SPARE			
35	20	1	1000	E	SPARE	C	SPARE			
37	20	1	1000	E	SPARE	A	SPARE			
39	15	2	52	M	AC-1	C	SPARE			

LOAD TYPE DESCRIPTIONS											
L - LIGHTING, H - HEAT, R - RECEPTACLE, LM - LARGEST MOTOR, M - MOTOR, E - EQUIPMENT, KE - KITCHEN EQUIPMENT, S - SUBFEED											
TOTAL CONNECTED LOADS				PANEL (FEEDER) DEMAND LOAD CALCULATIONS							
PHASE A	PHASE B	PHASE C	PANEL	LOAD TYPE	LOAD	MULTIPLIER	DEMANDED LOAD				
PANEL VA	9,839	9,887	9,786	CONTINUOUS (L OR H)	0	x 1.25	= 0 VA				
PANEL A	82	82	82	RECEPTACLE							
PHASE BALANCING (BASED ON CONNECTED LOADS ABOVE)				FIRST 10,000 VA: 10,000 x 1.00 = 10,000 VA							
				ADDITIONAL VA: 490 x 0.50 = 245 VA							
				LARGEST MOTOR: 4,774 x 1.25 = 5,968 VA							
				MOTOR: 1,280 x 1.00 = 1,280 VA							
				EQUIPMENT: 12,970 x 1.00 = 12,970 VA							
				KITCHEN EQUIPMENT: 0 x 1.00 = 0 VA							
				PIECES OF EQUIPMENT: 0							
				SUBFEED: 0 x 1.00 = 0 VA							
PANEL VA	10,289	10,337	10,082								
FEED THRU VA											
TOTAL VA	10,289	10,337	10,082								
TOTAL A	86	86	84								

PANEL L2A	PROJECT: Fruta Community Center	JOB NUMBER: 29005.00	17-Sep-03							
VOLTAGE L-L: 208 V		BUS RATING: 250 AMPS								
VOLTAGE L-G: 120 V		O.C. PROTECTION: 250 A/3P M.C.B.								
TYPE: 3PH/4W		S.C.R.M.S. RATING: 10,000 A.I.C. FULLY RATED								
MOUNTING: SURFACE										
CIR	CIRCUIT BREAKER	LOAD VA	LOAD TYPE	LOAD SERVED	BUS	LOAD SERVED	LOAD TYPE	LOAD VA	CIRCUIT BREAKER	CIR
NO.	RATING	POLES	VA	TYPE				VA	POLES	RATING
1	20	1	1940	E	R-ELEC, JAN, ROOF, PIT, EF-8	A	M-DIVIDER CURTAIN	LM	1176	1
3	20	1	360	R	R-TELE/COM	B	M-BACKBOARD	M	1176	1
5	20	1	360	R	R-TELE/COM	C	M-BACKBOARD	M	1176	1
7	20	1	180	R	R-ELEV MACHINE	A	M-BACKBOARD	M	1176	1
9	20	1	900	L	L-ELEVATOR CAB LTG	B	M-BACKBOARD	M	1176	1
11	20	1	900	E	E-ELEVATOR CAB POWER	C	M-BACKBOARD	M	1176	1
13	20	1	1000	R	R-ROUND SYSTEM	A	M-BACKBOARD	M	1176	1
15	20	1	1440	R	R-GROUP STUDIO, ROOF	B	R-TV'S	E	1250	1
17	20	1	1540	E	R-GROUP TRACK	C	R-NEST ROOF	R	720	1
19	20	1	612	A	R-EXERCISE	C	R-EXERCISE	E	1500	1
21	20	1	970	E	R-TRACK, ROOF	B	R-EXERCISE	E	1500	1
23	20	1	300	E	E-RELAY PANELS	C	R-EXERCISE	E	1500	1
25	20	1	192	M	EF-6, 7	A	R-EXERCISE	E	1500	1
27	20	1	100	E	RELAY PANEL	B	R-EXERCISE	E	1500	1
29	20	1	696	M	EF-10	C	R-EXERCISE	E	1500	1
31	20	1	192	M	EF-9, EF-12	A	R-EXERCISE	E	1500	1
33	20	1	696	M	EF-2	B	R-EXERCISE	E	1500	1
35	20	1	192	M	EF-5, EF-11	C	R-EXERCISE	E	1500	1
37	20	1	1500	E	E-WINDOW SHADES	B	R-EXERCISE	E	1500	1
41	20	1	790	E	E-TRACK	C	R-EXERCISE	E	1500	1
43	20	1	1000	E	SPARE	A	R-EXERCISE	E	1500	1
45	20	1	1000	E	SPARE	B	R-EXERCISE	E	1500	1
47	20	1	800	E	E-WINDOW SHADES	C	R-EXERCISE	E	1500	1
49	35	2	1798	M	CU-2	A	ELEVATOR RELAY	E	200	1
51	20	1	1798	M	CU-3	B	R-ROOF	R	540	1
53	35	2	1798	M	CU-3	C	SPARE			
55	20	1	1798	M	CU-4	A	SPARE			
57	20	1	1798	M	CU-4	B	SPARE			
59	20	1	1798	M	CU-4	C	SPARE			
61	20	1	1000	E	SPARE	A	SPARE			
63	20	1	1000	E	SPARE	B	SPARE			
65	20	1	1000	E	SPARE	C	SPARE			
67	20	1	1000	E	SPARE	A	SPARE			

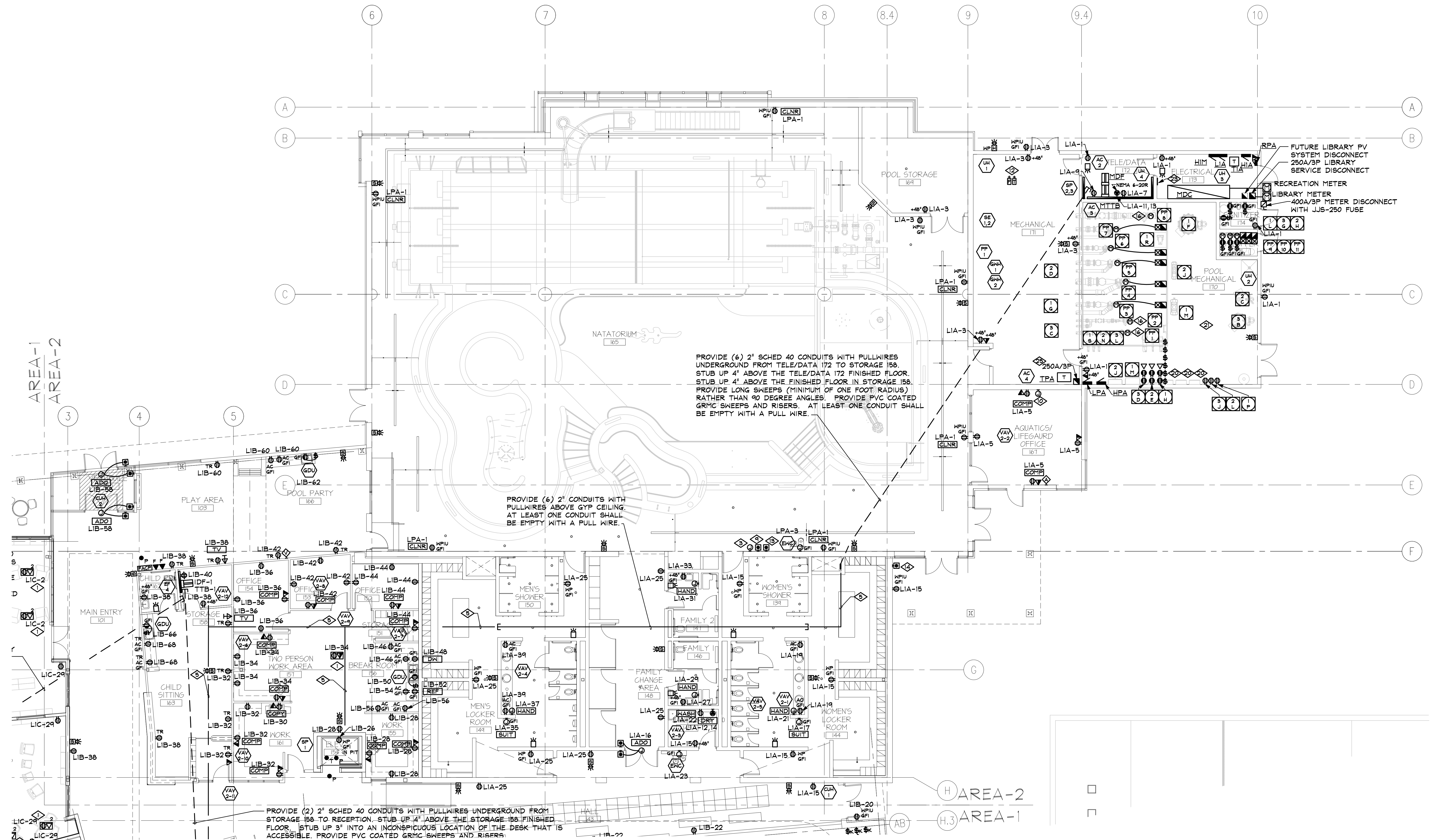


SISK COMBS DETHLEFS

A Professional Corporation 475 Lincoln Street, Suite 100 Denver, Colorado 80203 303.308.0200 FAX 303.022.2222



7550 W. Yale Ave., B-130 Denver, Co 80227 303.988.9305 303.984.8603 fax ies@iesystems-inc.com

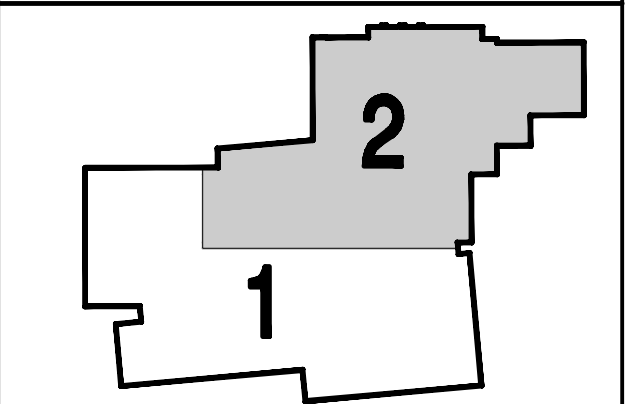


PROVIDE (6) 2" SCHED 40 CONDUITS WITH PULLWIRES UNDERGROUND FROM TELE/DATA 172 TO STORAGE 158. STUB UP 4" ABOVE THE FINISHED FLOOR IN STORAGE 158. PROVIDE LONG SNEEPS (MINIMUM OF ONE FOOT RADIUS) RATHER THAN 90 DEGREE ANGLES. PROVIDE PVC COATED GRMC SNEEPS AND RISERS. AT LEAST ONE CONDUIT SHALL BE EMPTY WITH A PULL WIRE.

PROVIDE (6) 2" CONDUITS WITH PULLWIRES ABOVE GYP CEILING. AT LEAST ONE CONDUIT SHALL BE EMPTY WITH A PULL WIRE.

PROVIDE (2) 2" SCHED 40 CONDUITS WITH PULLWIRES UNDERGROUND FROM STORAGE 158 TO RECEPTION. STUB UP 4" ABOVE THE STORAGE 158 FINISHED FLOOR. STUB UP 3" INTO AN INCONSPICUOUS LOCATION OF THE DESK THAT IS ACCESSIBLE. PROVIDE PVC COATED GRMC SNEEPS AND RISERS.

KEY PLAN



Issues/Revisions:	Date:
SCHEMATIC DESIGN	04-13-04
DESIGN DEVELOPMENT	07-10-04
90% CD'S	04-07-04
CONSTRUCTION DOCUMENTS	04-22-04

LOWER LEVEL POWER & SYSTEMS PLAN AREA 2
 E2.12 1/8"=1'-0"
 PLAN NORTH

- DETAIL NOTES**
- ◇ PROVIDE RECESSED FLOOR BOX HUBBELL #FFER62 WITH TWO #53017G FLANGES. PROVIDE #53823 AND #53826 COVER PLATES.
 - ◇ PROVIDE RECESSED FLOOR BOX HUBBELL #FFER63 WITH THREE #53017G FLANGES. PROVIDE TWO #53823 AND ONE #53826 COVER PLATES.
 - ◇ PROVIDE A 15 MINUTE TIMER FOR THE SPA HYDROTHERAPY PUMP. THE SWITCH SHALL BE INTERMATIC DPST #FD415M. VERIFY WITH SPA PROVIDER PRIOR TO ROUGH-IN.
 - ◇ MOUNT TRANSFORMER FROM CEILING. REFER TO DETAIL 2 ON SHEET E1.40.
 - ◇ PROVIDE J-HOOKS AS REQUIRED FOR TELECOMMUNICATIONS, FIRE ALARM AND SECURITY CABLES. COORDINATE CABLE RUNS WITH FIRE ALARM SUBCONTRACTOR AND SECURITY SUB CONTRACTOR.
 - ◇ PROVIDE TELECOMMUNICATIONS CABLING UNDERGROUND FOR THE FREE STANDING RECEPTION DESK. UTILIZE CONDUIT STUBBED UNDER DESK THAT IS ROUTED TO STORAGE 158.
 - ◇ PROVIDE TELECOMMUNICATIONS CABLING UNDERGROUND FOR ALL DEVICES SHOWN IN THE LIBRARY.

- DETAIL NOTES**
- ◇ PROVIDE FAN CONTROL FOR GYMNASIUM FAN AT RECEPTION DESK. COORDINATE FAN CONTROLS AND CIRCUITING WITH MANUFACTURERS INSTALLATION INSTRUCTIONS.
 - ◇ PROVIDE NEMA 4X RED MUSHROOM HEAD MAINTAINED-CONTACT, NORMALLY CLOSED EPO PUSHBUTTON WITH COVER. FLUSH-MOUNTED. EPO SWITCH IS TO SHUT DOWN THE SPA PUMPS (PP-2, PP-3). LABEL AS "SPA EMERGENCY POWER OFF". MOUNT SWITCH AT STANDARD SWITCH HEIGHT.
 - ◇ PROVIDE PATHWAY FROM MOTOR CONTROL CENTER TO THIS LOCATION FOR REMOTE START/STOP STATION. STATION SHALL BE FOR ALL FEATURE PUMPS (PP-4 THRU PP-7).
 - ◇ COORDINATE MOUNTING HEIGHT WITH ARCHITECT PRIOR TO ROUGH-IN.
 - ◇ PROVIDE QUANTITY OF TAMPER AND FLOW SWITCHES SHOWN ON THE PLUMBING DRAWINGS.
 - ◇ PROVIDE NEMA 4X RED MUSHROOM HEAD MAINTAINED-CONTACT, NORMALLY CLOSED EPO PUSHBUTTON WITH COVER. FLUSH-MOUNTED. EPO SWITCH IS TO SHUT DOWN THE POOL PUMPS (PP-4 THRU PP-8). LABEL AS "POOL EMERGENCY POWER OFF". MOUNT SWITCH AT STANDARD SWITCH HEIGHT.

- DETAIL NOTES**
- ◇ PROVIDE NEMA 4X RED MUSHROOM HEAD MAINTAINED-CONTACT, NORMALLY CLOSED EPO PUSHBUTTON WITH COVER. FLUSH-MOUNTED. EPO SWITCH IS TO SHUT DOWN THE OUTDOOR POOL PUMP (PP-1). LABEL AS "POOL EMERGENCY POWER OFF". MOUNT SWITCH AT STANDARD SWITCH HEIGHT.
 - ◇ PROVIDE DOOR BUZZER AND CONNECTION FROM THIS LOCATION TO THE FRONT DESK. PROVIDE NUTONE #LAS2XH WITH #5909 TRANSFORMER OR EQUAL.
 - ◇ DISCONNECT AND STARTER PROVIDED IN THE SPCS CONTROLLER FOR THIS PUMP. REFER TO POOL DRAWINGS FOR CONTROLLER LOCATION.
 - ◇ PROVIDE 1" CONDUIT ABOVE CEILING LEVEL FOR FUTURE LOW VOLTAGE CABLE. PROVIDE PULLSTRING IN CONDUIT.
 - ◇ PROVIDE A 4-GANG DEEP JUNCTION BOX. STUB (2) 1" CONDUITS FROM THIS BOX UP TO 6" ABOVE ACCESSIBLE CEILING. BOX AND PATHWAY FOR FUTURE PROJECTOR CONNECTIONS AND INTERFACES.
 - ◇ PROVIDE RECEPTACLE, DATA AND TV OUTLET FLUSH WITH CEILING. SUPPORT BOXES FROM STRUCTURE ABOVE THE ACCESSIBLE CEILING.
 - ◇ LOCATION OF PUMP CONTROLLERS.
 - ◇ PROVIDE GFI RECEPTACLES FOR ALL RECEPTACLES IN THE POOL MECHANICAL ROOM.

- DETAIL NOTES**
- ◇ PROVIDE KEY SWITCH TO CONTROL WINDOW SHADES FOR WINDOWS IN THE GYMNASIUM. REFER TO SECOND FLOOR POWER PLAN FOR WINDOW LOCATIONS.
 - ◇ PROVIDE (6) 2" CONDUITS FOR PV SYSTEM. STUB THREE TO NATATORIUM ROOF AND THREE TO LIBRARY ROOF. CAP BOTH ENDS OF CONDUIT AND PROVIDE PULL STRING IN CONDUIT.
 - ◇ PROVIDE GFI RECEPTACLES IN KITCHEN PER NEC 210.8.B.2
 - ◇ PROVIDE 250A/3P DISCONNECT FOR TRANSFORMER TPA SECONDARY FEED.

FRUITA COMMUNITY CENTER & MESA COUNTY LIBRARIES/ FRUITA BRANCH

FRUITA COLORADO

SCD Project No.: 0401

LOWER LEVEL POWER & SYSTEMS PLAN, AREA 2

Drawn by: KLY
 Checked by: CMP

E2.12



SISK COMBS DETHLEFS

A Professional Corporation 475 Lincoln Street, Suite 100 Denver, Colorado 80203 303.308.0200
 Fax 303.308.0222



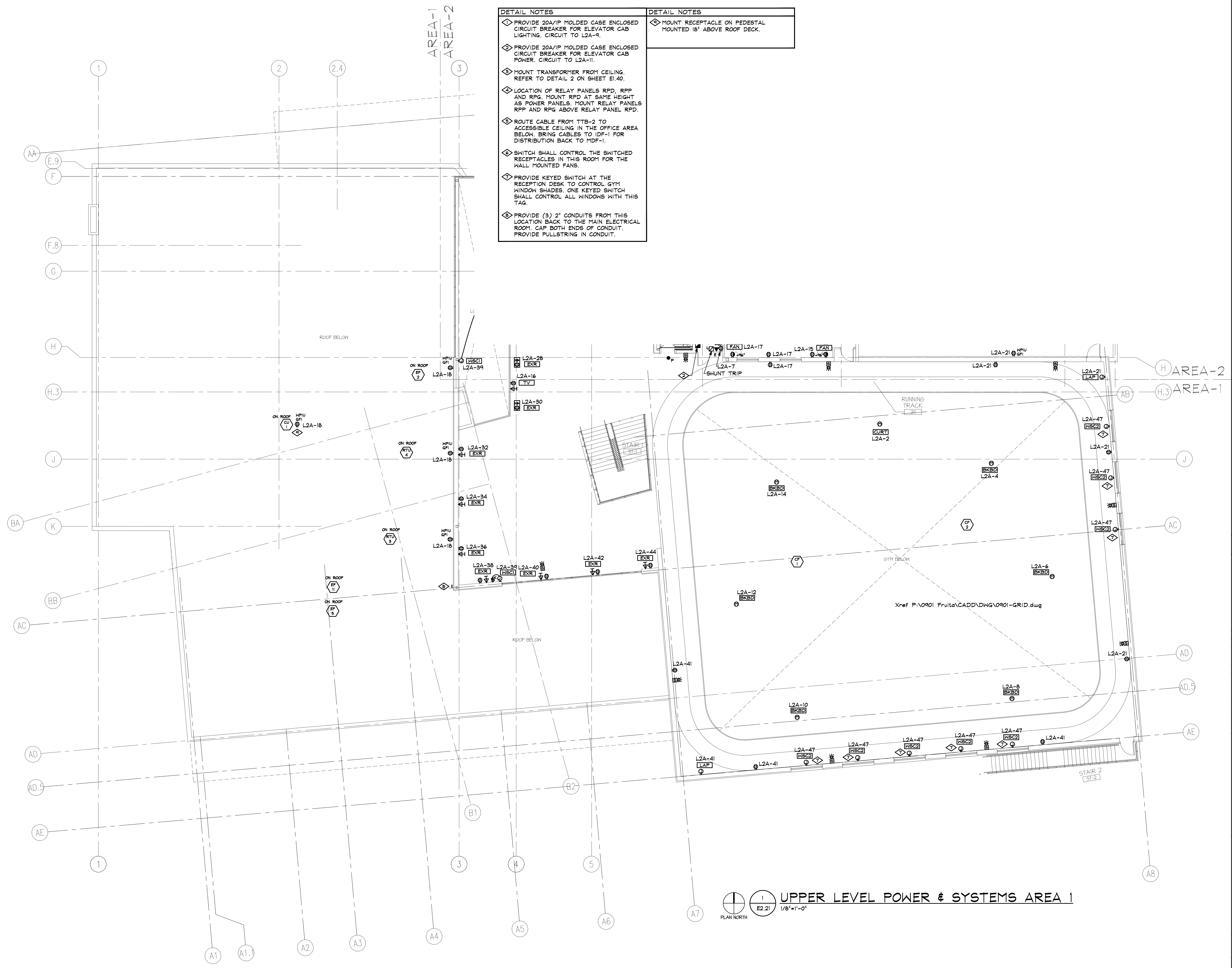
7550 W. Yale Ave., B-130
 Denver, Co 80227
 303.988.9305
 303.984.8603 fax
 ies@iesystems-inc.com

DETAIL NOTES

- ◇ PROVIDE 20A/1P MOLDED CASE ENCLOSED CIRCUIT BREAKER FOR ELEVATOR CAB LIGHTING. CIRCUIT TO L2A-9.
- ◇ PROVIDE 20A/1P MOLDED CASE ENCLOSED CIRCUIT BREAKER FOR ELEVATOR CAB POWER. CIRCUIT TO L2A-11.
- ◇ MOUNT TRANSFORMER FROM CEILING. REFER TO DETAIL 2 ON SHEET EI.40.
- ◇ LOCATION OF RELAY PANELS RPD, RPP AND RPG. MOUNT RPD AT SAME HEIGHT AS POWER PANELS. MOUNT RELAY PANELS RPP AND RPG ABOVE RELAY PANEL RPD.
- ◇ ROUTE CABLE FROM TTB-2 TO ACCESSIBLE CEILING IN THE OFFICE AREA BELOW. BRING CABLES TO IDF-1 FOR DISTRIBUTION BACK TO MDF-1.
- ◇ SWITCH SHALL CONTROL THE SWITCHED RECEPTACLES IN THIS ROOM FOR THE WALL MOUNTED FANS.
- ◇ PROVIDE KEYED SWITCH AT THE RECEPTION DESK TO CONTROL GYM WINDOW SHADES. ONE KEYED SWITCH SHALL CONTROL ALL WINDOWS WITH THIS TAG.
- ◇ PROVIDE (3) 2" CONDUITS FROM THIS LOCATION BACK TO THE MAIN ELECTRICAL ROOM. CAP BOTH ENDS OF CONDUIT. PROVIDE PULLSTRING IN CONDUIT.

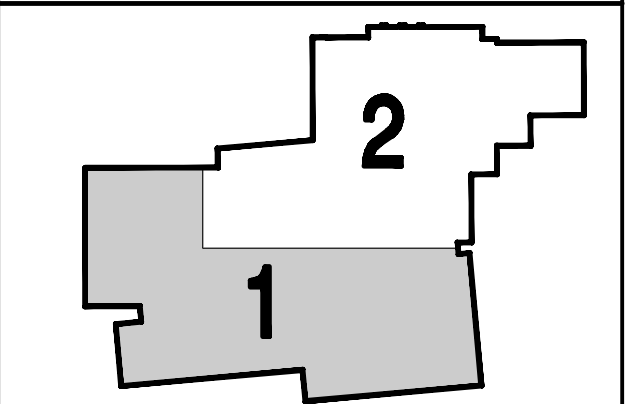
DETAIL NOTES

- ◇ MOUNT RECEPTACLE ON PEDESTAL MOUNTED 18" ABOVE ROOF DECK.



UPPER LEVEL POWER & SYSTEMS AREA 1
 1/8"=1'-0"
 PLAN NORTH

KEY PLAN



Issues/Revisions:	Date:
SCHEMATIC DESIGN	04-13-04
DESIGN DEVELOPMENT	07-10-04
90% CDS	04-01-04
CONSTRUCTION DOCUMENTS	04-22-04

FRUITA COMMUNITY CENTER & MESA COUNTY LIBRARIES/FRUITA BRANCH

FRUITA COLORADO

SCD Project No.: 0401

UPPER LEVEL POWER & SYSTEMS PLAN, AREA 1

Drawn by: KLY
 Checked by: CMP

E2.21

