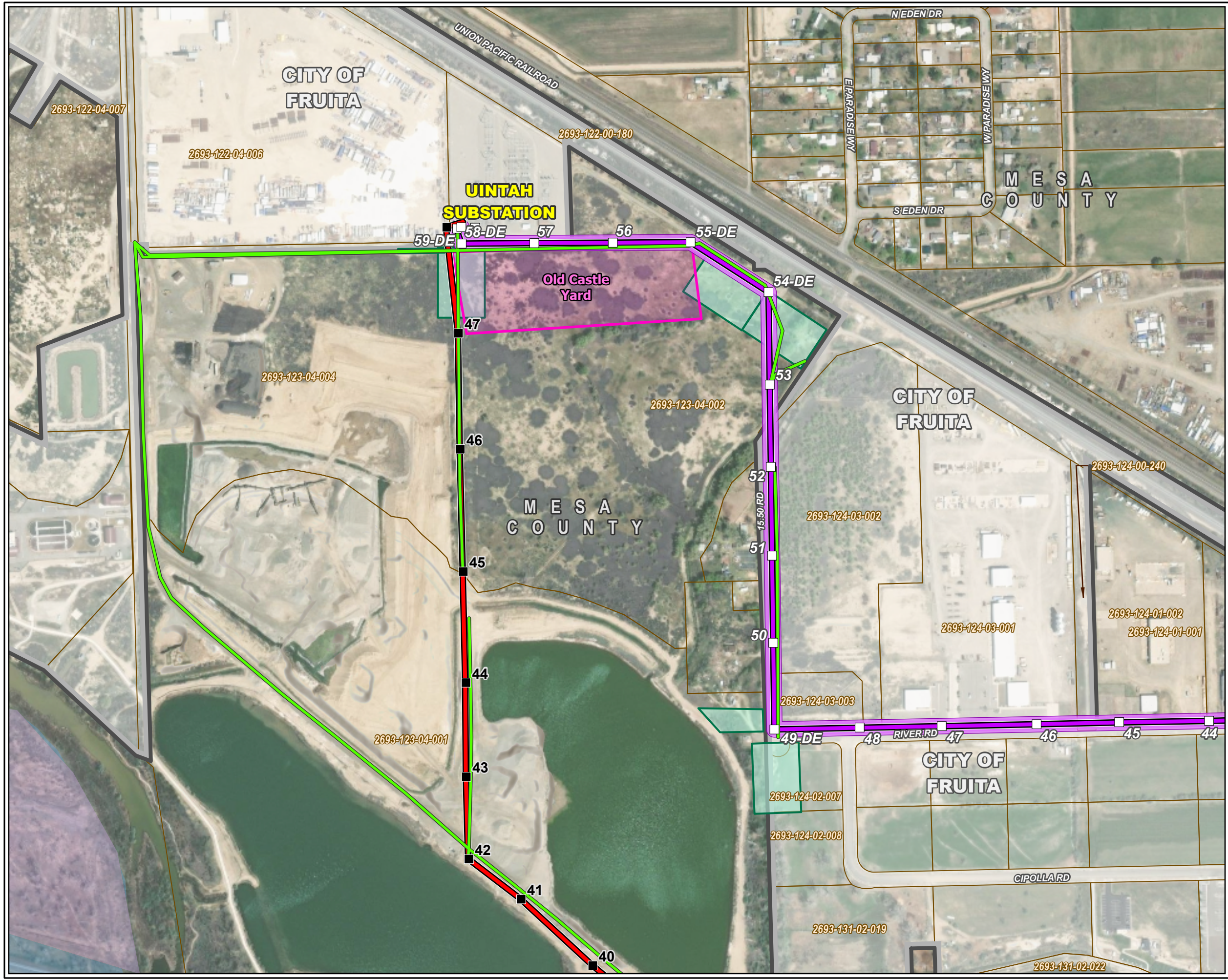


Fruita Site Location
Xcel Energy Circuit 6683
Rebuild Project
 Mesa County, Colorado
 Map 1 of 5

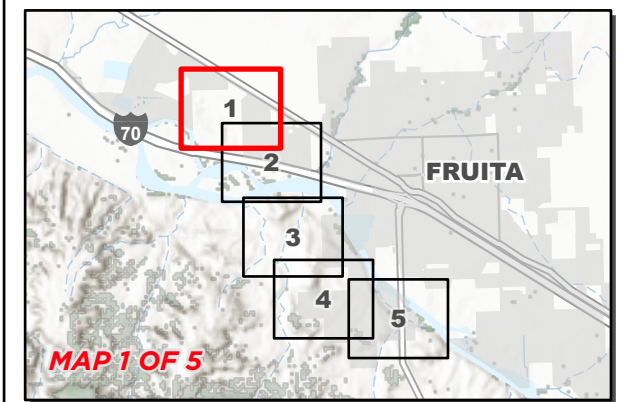
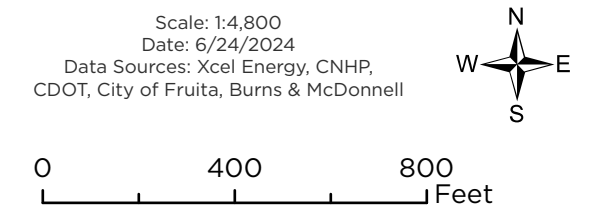


Legend

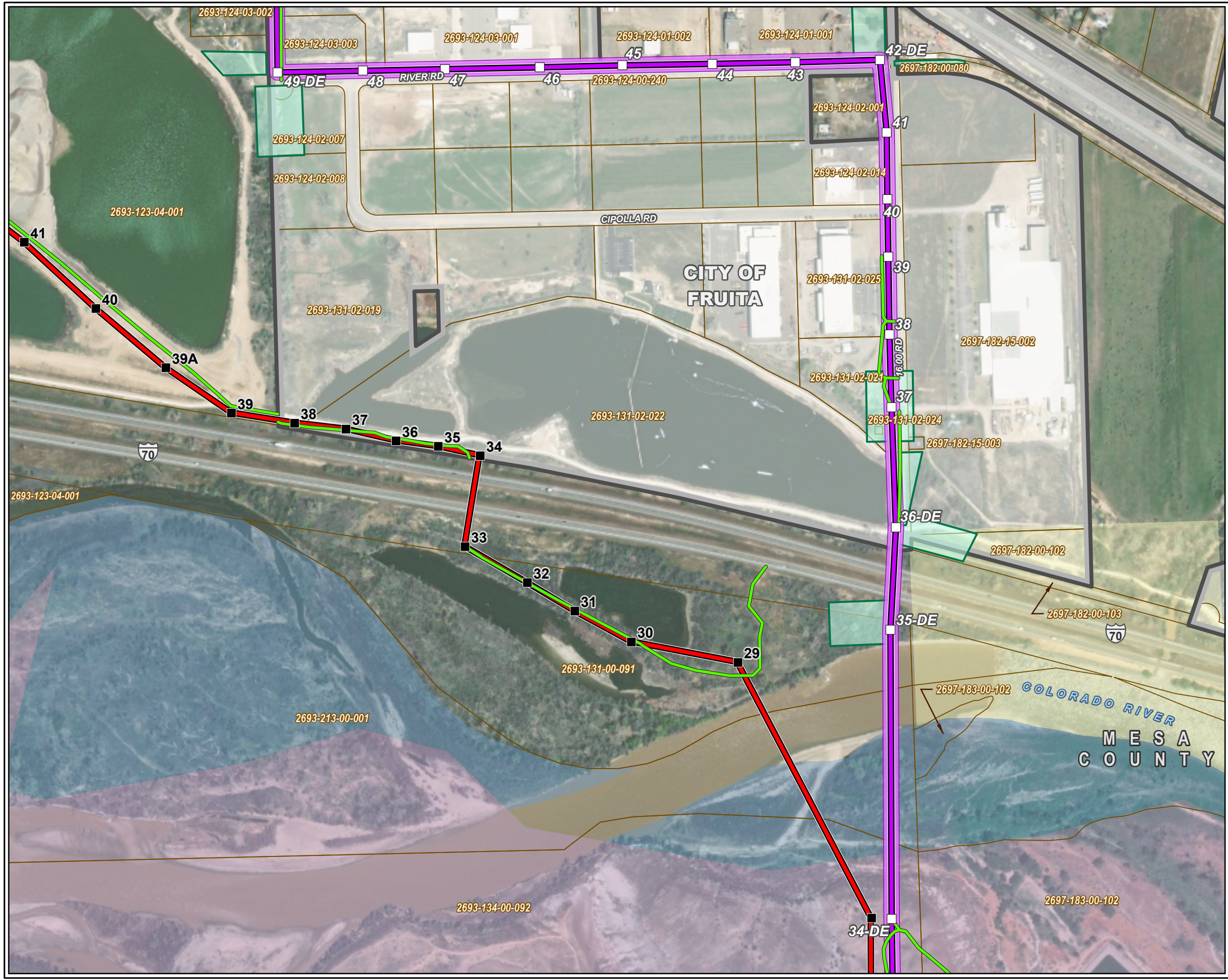
- Existing Transmission Line Structures
- Rebuilt Transmission Line Structures
- Existing 6683 Centerline
- Rebuilt 6683 Centerline
- Access Roads
- Proposed Right-of-Way
- Yard
- Pull Sites

Surface Management

- Bureau of Reclamation
- State
- City of Fruita Boundary
- Parcel Boundaries



Fruita Site Location
Xcel Energy Circuit 6683
Rebuild Project
 Mesa County, Colorado
 Map 2 of 5



Legend

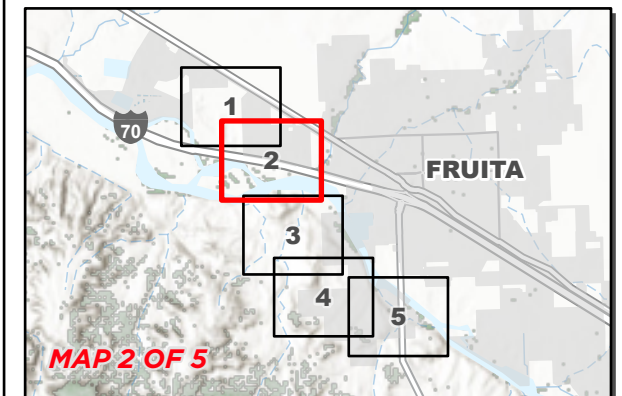
- Existing Transmission Line Structures
- Rebuilt Transmission Line Structures
- Existing 6683 Centerline
- Rebuilt 6683 Centerline
- Access Roads
- Proposed Right-of-Way
- Pull Sites

Surface Management

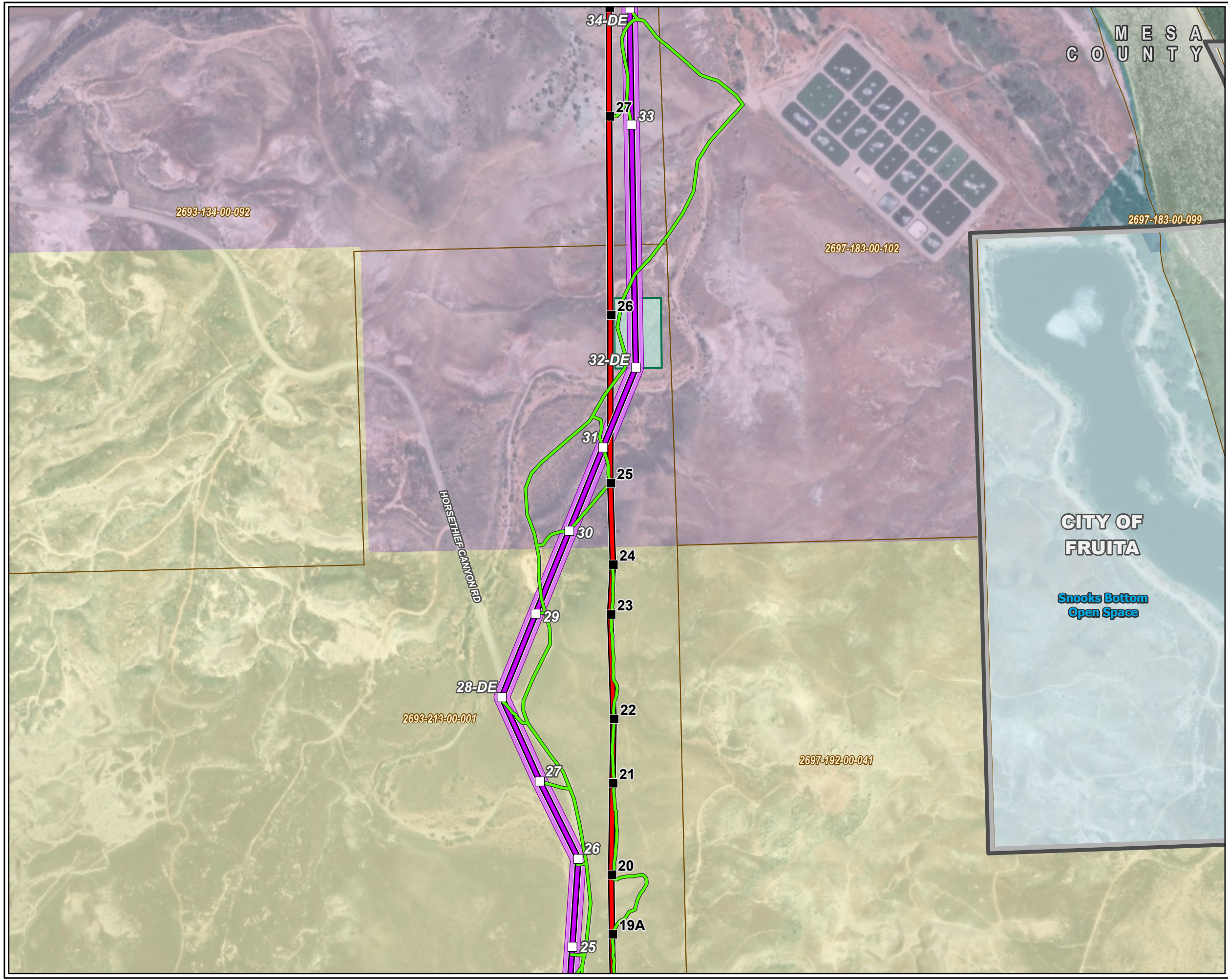
- Bureau of Land Management
- Bureau of Reclamation
- State
- City of Fruita Boundary
- Parcel Boundaries

Scale: 1:4,800
 Date: 6/24/2024
 Data Sources: Xcel Energy, CNHP, CDOT, City of Fruita, Burns & McDonnell

0 400 800 Feet



Fruita Site Location
Xcel Energy Circuit 6683
Rebuild Project
 Mesa County, Colorado
 Map 3 of 5

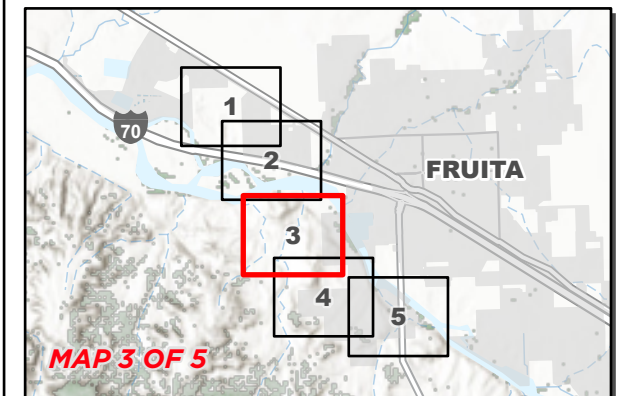
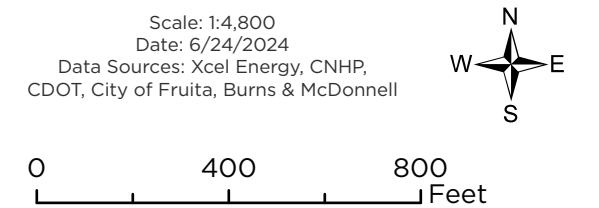


Legend

- Existing Transmission Line Structures
- Rebuilt Transmission Line Structures
- Existing 6683 Centerline
- Rebuilt 6683 Centerline
- Access Roads
- Proposed Right-of-Way
- Pull Sites

Surface Management

- Bureau of Land Management
- Bureau of Reclamation
- State
- Local
- City of Fruita Boundary
- Parcel Boundaries



Fruita Site Location
Xcel Energy Circuit 6683
Rebuild Project
 Mesa County, Colorado
 Map 4 of 5

Legend

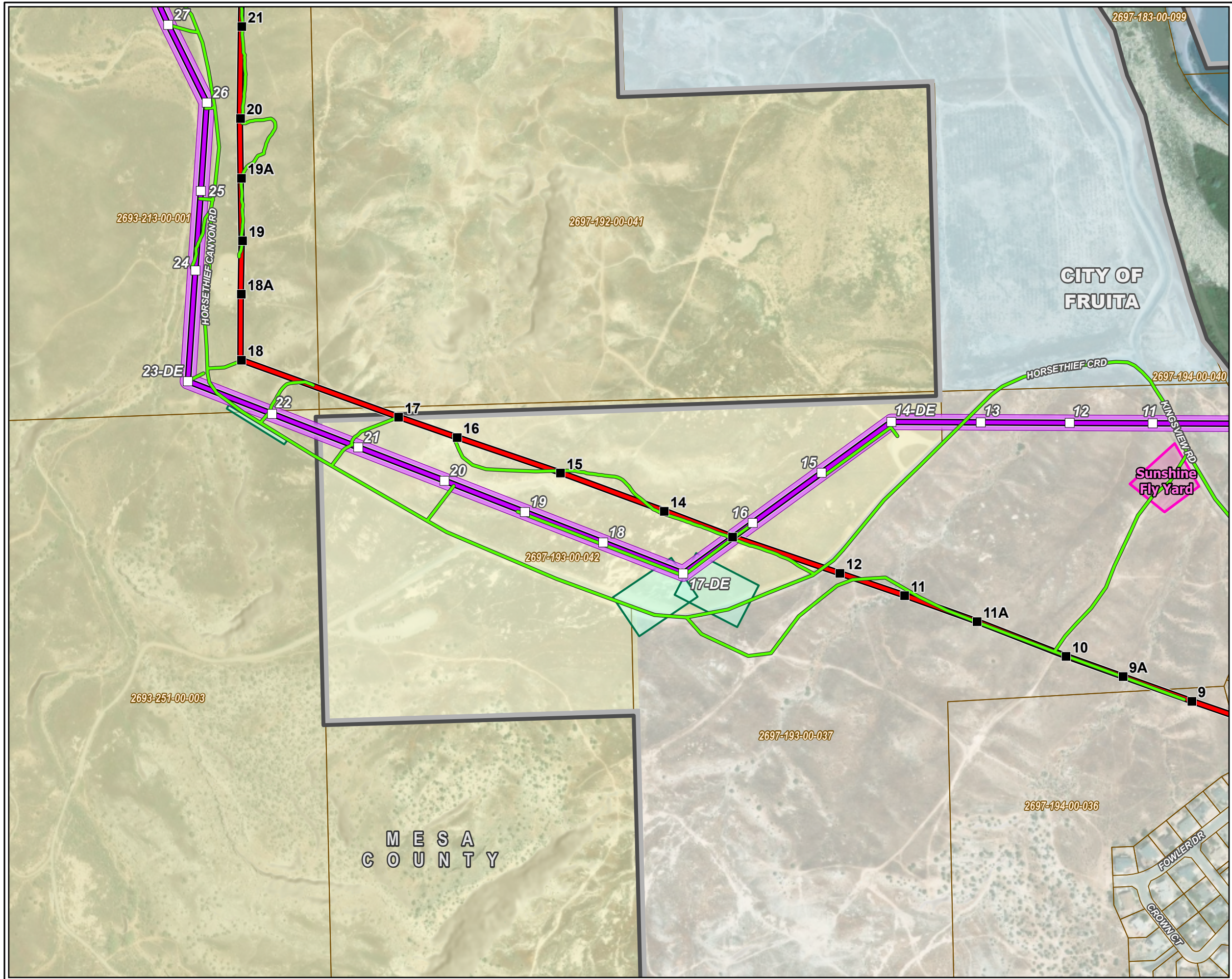
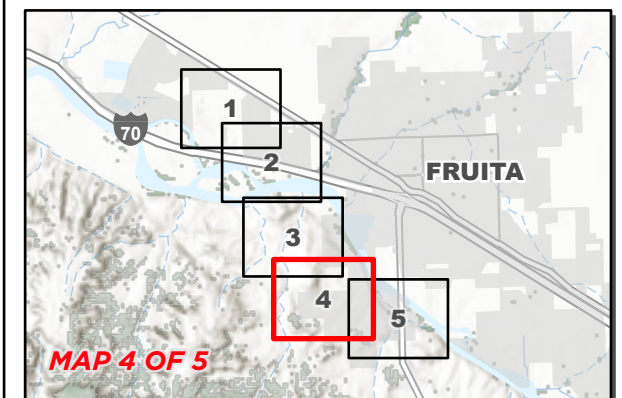
- Existing Transmission Line Structures
- Rebuilt Transmission Line Structures
- Existing 6683 Centerline
- Rebuilt 6683 Centerline
- Access Roads
- Proposed Right-of-Way
- Yard
- Pull Sites

Surface Management

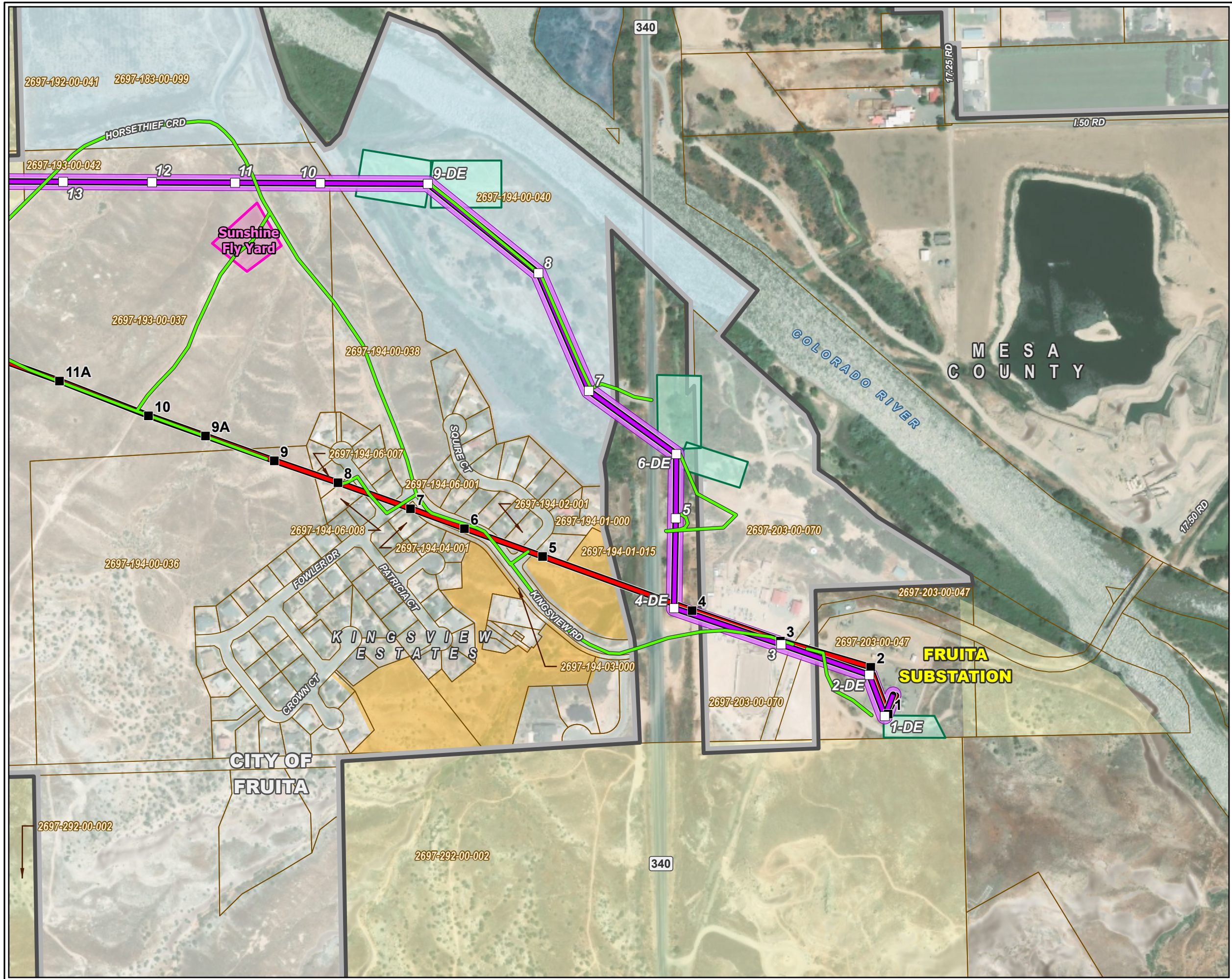
- Bureau of Land Management
- State
- Local
- City of Fruita Boundary
- Parcel Boundaries

Scale: 1:4,800
 Date: 6/24/2024
 Data Sources: Xcel Energy, CNHP, CDOT, City of Fruita, Burns & McDonnell

0 400 800 Feet



Fruita Site Location
Xcel Energy Circuit 6683
Rebuild Project
 Mesa County, Colorado
 Map 5 of 5



- Legend**
- Existing Transmission Line Structures
 - Rebuilt Transmission Line Structures
 - Existing 6683 Centerline
 - Rebuilt 6683 Centerline
 - Access Roads
 - Proposed Right-of-Way
 - Yard
 - Pull Sites

- Surface Management**
- Bureau of Land Management
 - State
 - Local
 - Private Conservation
 - City of Fruita Boundary
 - Parcel Boundaries

Scale: 1:4,800
 Date: 6/24/2024
 Data Sources: Xcel Energy, CNHP, CDOT, City of Fruita, Burns & McDonnell

